



R4746661

📍 Fuengirola

REF# R4746661 360.000 €

BEDS

2

BATHS

2

BUILT

77 m²

TERRACE

55 m²

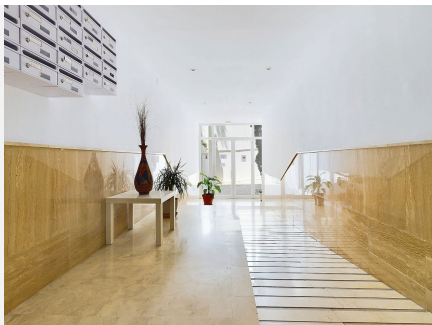
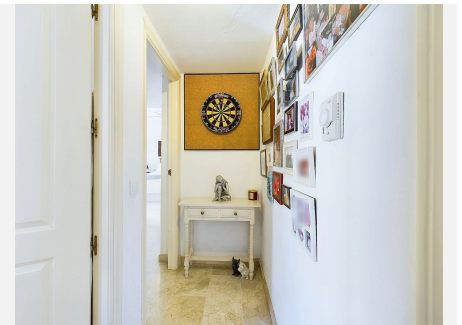
Fabulous 2 bed 2 bath penthouse with stunning sea and mountain views in Torreblanca, Fuengirola. This penthouse has the best orientation in the building, occupying the southwest corner of the block in the sought after urbanisation: El Diamante de Torreblanca. With spectacular sea views on the south side and mountain views towards the west and north, you will never get bored of following the sun from the wrap-around terrace that offers a whopping 50 square meters for chilling, sun-bathing, cooking, and dining or even installing a sauna or bathtub if you so desired! The complex is very well appointed and looked after and enjoys a lift, making it totally accessible, communal pools set in grassy area, security entry system and underground parking. The apartment has 2 bedrooms with built-in wardrobes, the master en-suite, a fully equipped independent kitchen with exit to the terrace and a super light living room with windows to the south and west. There is air conditioning throughout, and part of the furniture and the parking space are included in the price. The bathrooms have both a shower room and bath for added flexibility and for families with young kids. Torreblanca is located between Fuengirola and Benalmadena, with amazing promenades and beaches, restaurants and shops on its doorstep; combined with the tranquillity, views and feel of being up in the mountains! With the train station nearby, you can jump on a train to reach Malaga or the airport in under an hour. The penthouse has been rented for the last 10 years and could benefit from some redecorating but

+34 951 123 083 | +44 (0)330 179 8687 | info@idiliqestates.com Local 28, Edificio D, Centro de Negocios Puerta de Banús, N-340, Km 175, 29660 Nueva Andalucía

IDILIQ

ESTATES

offers incredible value for money in a very well-established area of Fuengirola and Costa del Sol



IDILIQ

ESTATES

