

IDILIQ

ESTATES



R3584206

📍 Alhaurín el Grande

REF# R3584206 890.000 €

BEDS

8

BATHS

5

BUILT

561 m²

PLOT

3433 m²

Ideal as Bed & Breackfast !!! It is distributed in the right way. Main house: Ground floor: Large entrance hall, bright dining room with fireplace and access to large terrace, kitchen with dining area and access to terrace, 2 large bedrooms with fitted wardrobes and 2 bathrooms (1 en suite) utility room. First floor: Large hall with library. Master bedroom with en suite bathroom and 2 dressing rooms. Second floor: Large glazed living room with terrace and beautiful views of the mountains and the town. Outside: Large garden with pool, terraces, artificial lake, covered terraces and porches, barbecue areas, parking area for about 8 cars (2 decks) Basement.: Guest apartment with access from the main and independent house. Living room with kitchenette with bar, 2 bedrooms, 1 bathroom and access to the garden. Guest house: Large loft in chimena distributed on 3 levels, with kitchenette, access to private garden, 1 bathroom and currently has 1 bed per level. Property in excellent condition with the possibility of having 2 or 3 more bedrooms. It has town hall water and community well for irrigation. Alarm system, satellite internet, air conditioning and heating with radiators. Plot: 3.433m². Total built size: 561.70m². (including Main house: 336.26m². Garage: 29m². Pool: 29m². Open terrace: 83.49m²) IBI: 664.59€ per year. Built Year: 1996 Distances Gas station: 2 km. Alhaurín el Grande center: 2,4km Coin : 7.3km. Beach: 17,2km Malaga airport: 25.8km.

+34 951 123 083 | +44 (0)330 179 8687 | info@idiliqestates.com Local 28, Edificio D, Centro de Negocios Puerta de Banús, N-340, Km 175, 29660 Nueva Andlucia

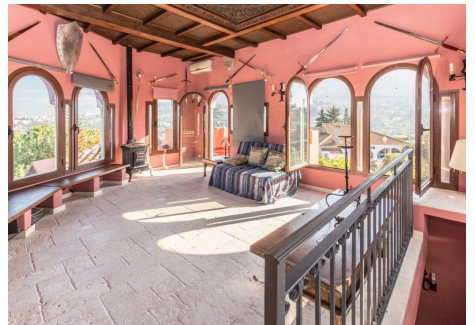
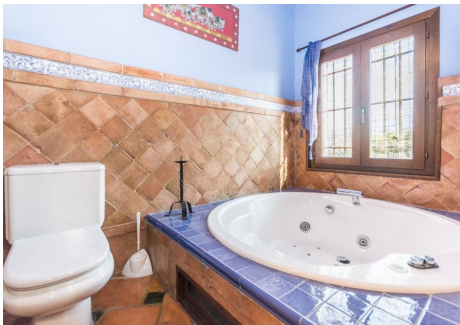
IDILIQ

ESTATES



IDILIQ

ESTATES



IDILIQ

ESTATES

