

# IDILIQ

ESTATES



R2961143

📍 Mijas Costa

REF# R2961143 895.000 €

BEDS

5

BATHS

4

BUILT

363 m<sup>2</sup>

PLOT

915 m<sup>2</sup>

TERRACE

54 m<sup>2</sup>

Large Villa with great qualities in Carretera de Mijas area with guest accommodation, lift and orchard. It is distributed as follows: Ground floor: Entrance hall, large living room with fireplace and access to the terrace, large fully equipped kitchen with dining area and also with access to the terrace. 1 guest toilet. First floor: 3 large bedrooms with fitted wardrobes and 2 bathrooms (1 on suite) Large terrace with beautiful views. Basement / Guest accommodation: Large area ideal for the second living room, gym, cinema, games room, etc. Fully equipped open plane kitchen, 1 bedroom and 1 room currently used as an office. 1 bathroom and direct access to the pool. Solarium: large terrace solarium with storage area. Exterior: Large front yard with storage, garage area for 2 cars. Backyard with large pool, barbecue and children's area. Orchard area and area of fruit trees zone access to the stream. Property in excellent condition and high quality with lift on all floors, armored climalit windows, air conditioning cold heat, electric shutters, intercom, saltwater pool, hot water by solar panels and water softener. Plot: 900m<sup>2</sup>. Total built size: 363,35m<sup>2</sup>. Living area: 299.25m<sup>2</sup>. Porchs: 7,80 and 22.50m<sup>2</sup>. Terrace 33,80m<sup>2</sup>. Solarium: 94m<sup>2</sup>. Swimming pool: 32m<sup>2</sup>. IBI: 1.463,33€ per year. Rubbish: 149,85€ per year. Built year: 2013. Distances: Restaurants: 750mts. Bus stop: 630mts. Amenities: 1,4km. Mijas Pueblo: 3,5km. Beach: 4,3km. Malaga Airport: 25,5km.

+34 951 123 083 | +44 (0)330 179 8687 | info@idiliqestates.com Local 28, Edificio D, Centro de Negocios Puerta de Banús, N-340, Km 175, 29660 Nueva Andlucia

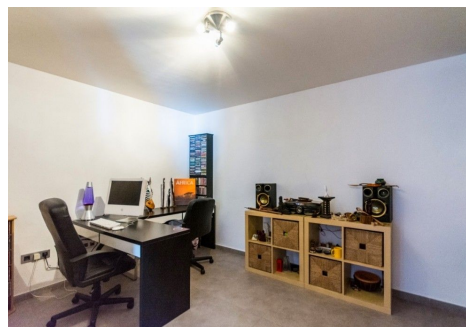
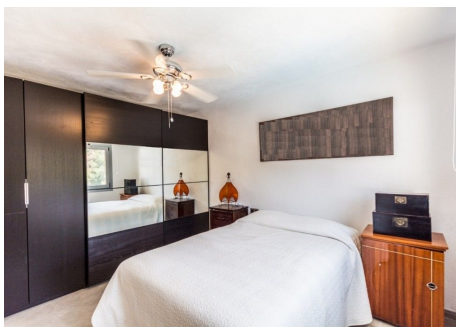
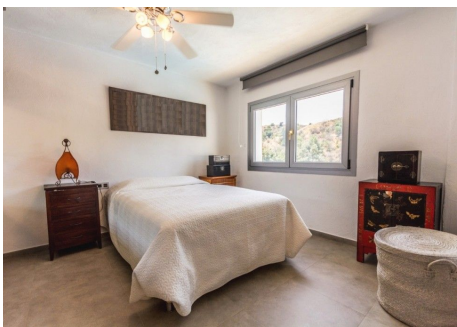
# IDILIQ

ESTATES



# IDILIQ

ESTATES



# IDILIQ

ESTATES

