



R207193

 Torremolinos

REF# R207193 1.010.000 €

BEDS

10

BATHS

4

BUILT

500 m<sup>2</sup>

PLOT

1675 m<sup>2</sup>

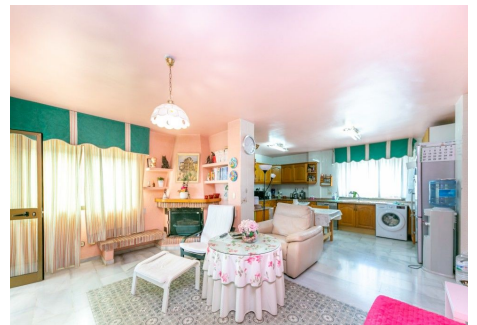
Huge Villa in a very exclusive, safe and quiet area but close to services, airport, beach and motorway. The property sets on a flat plot of 1.675m<sup>2</sup> and is divided into 3 houses: The main house has 3 floors: The ground floor is accessed by a beautiful and spacious hall with 3 access: 1st leads to the large kitchen dining room fully equipped with a table in the center and a living area with fireplace and access to large covered terrace. 2nd access leads to the living room with another fireplace, with access to the main terrace and a spacious bedroom and a bathroom. 3rd access leads up to the first floor where there is a 2-second living room with access to a terrace and a large kitchen which could become again into a spacious bathroom and the living room into a large bedroom. On this level there is also another full bath and 2 very large bedrooms with fitted wardrobes and access to their sunny terraces with open views to the mountains and the sea. The top floor is a large attic very bright. The covered and large terrace on the ground floor is ideal for parties and meetings. It leads to a patio and garden. The basement has been converted into 2 complete and separate apartments; each has a kitchen, living room, 3 bedrooms and a bathroom. The house is surrounded by a beautiful garden with irrigation system, mature trees and a swimming pool, ample parking for numerous vehicles and a large workshop. The gate is automatic. There is a big water deposit. The property is in very good condition and offers a lot of possibilities. The complex has 24 hour security service. This is an unusual

+34 951 123 083 | +44 (0)330 179 8687 | [info@idiliqestates.com](mailto:info@idiliqestates.com) Local 28, Edificio D, Centro de Negocios Puerta de Banús, N-340, Km 175, 29660 Nueva Andlucia

# IDILIQ

## ESTATES

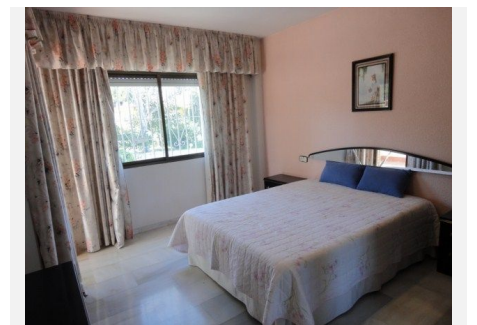
property and recommend a visit. Plot 1,675m<sup>2</sup>. Total constructed area 500m<sup>2</sup>. Year of construction 1988.



+34 951 123 083 | +44 (0)330 179 8687 | [info@idiliqestates.com](mailto:info@idiliqestates.com) Local 28, Edificio D, Centro de Negocios Puerta de Banús, N-340, Km 175, 29660 Nueva Andalucía

# IDILIQ

ESTATES



# IDILIQ

ESTATES

