



R5056330

📍 Alhaurín el Grande

REF# R5056330 1.200.000 €

BEDS

6

BATHS

3.5

BUILT

391 m²

PLOT

751 m²

A spacious and very elegant classic-style villa in impeccable condition and built with high-quality materials, located in the well-known "La Paca" residential area.

It is distributed as follows:

The basement is accessed through the vehicle entrance with two automatic gates and consists of a large garage area with capacity for four cars, plus ample storage space, as well as a spacious laundry room and a storage room.

The ground floor is accessed via the interior staircase through the basement or through the main entrance, which consists of an elegant entrance porch, an entrance hall, and a hallway leading to:

1st, the living-dining room with a fireplace, and from this living room to the porch with a dining table and views of the garden and pool;

2nd, the TV room;

3rd, a full bathroom;

+34 951 123 083 | +44 (0)330 179 8687 | info@idiliqstates.com Local 28, Edificio D, Centro de Negocios Puerta de Banús, N-340, Km 175, 29660 Nueva Andlucia

4th, the beautiful, spacious, fully equipped independent kitchen with a dining table in the centre, and from here also access to the porch.

5th, the first floor is reached via a marble staircase.

The first floor consists of 5 bedrooms and 2 bathrooms. The master bedroom is very spacious and has a large dressing room, a marble bathroom with a beautiful bathtub, and a balcony.

The other 4 bedrooms are also very spacious, 3 of which have built-in wardrobes. The fourth is currently used as an office.

The upper floor consists of a large bedroom with 2 balconies offering panoramic views of the mountains and the Guadalhorce Valley.

Exterior: Beautiful, easy-maintenance garden with an automatic irrigation system, fruit trees, a saltwater pool surrounded by sunny terraces offering plenty of privacy and tranquility.

A barbecue house of approximately 30 m² with a fully equipped kitchen, a toilet, and a storage room for gardening tools.

Property in perfect condition, ready to move into, with gas underfloor heating throughout, marble floors, double-glazed windows with electric shutters, a background music system, an alarm system, and air conditioning.

Property tax (IBI) 1.176€ per year.

Plot size: 751m². Total constructed area: 391 m².

Year of construction: 2004.

Distances:

Bus stop: 170 meters.

Alhaurín el Grande: 1.9 km.

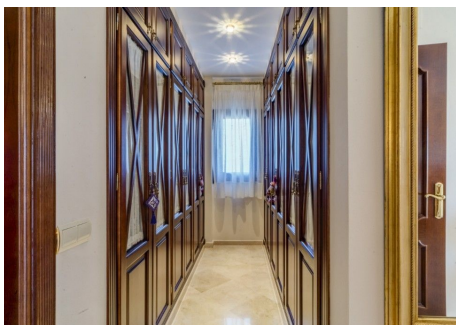
Lauro Golf Club house: 3 km.

Málaga Airport: 19 km.

Torremolinos Beach: 23 km.

IDILIQ

ESTATES



IDILIQ

ESTATES



IDILIQ

ESTATES

