

R5122144

📍 Sierrezuela

REF# R5122144 504.000 €

BEDS

5

BATHS

4

BUILT

240 m²

Corner Semi-Detached Chalet in La Sierrezuela – Peace, Space, and Connectivity

Discover this fantastic corner semi-detached home located in an exclusive and quiet gated community in La Sierrezuela (Mijas), just a 20-minute walk from the Fuengirola promenade and beaches. Ideal for families seeking space, comfort, and an excellent quality of life.

With 240 m² built over three floors, the property offers 5 bedrooms (4 main + 1 additional), all with built-in wardrobes, 4 bathrooms (3 full and 1 guest toilet on the ground floor), a spacious 25 m² living room with fireplace, and a fully equipped independent kitchen.

The property includes a private 60 m² garage with capacity for 3 cars and extra storage space, a 120 m² private garden perfect for enjoying the Mediterranean climate, and a sunny terrace with north, south, and west orientations offering natural light all day.

Located in a peaceful residential community with no through traffic or noise, it features direct access to green areas, a playground, and a beautiful communal pool. All this with excellent access to services:

+34 951 123 083 | +44 (0)330 179 8687 | info@idiliqestates.com Local 28, Edificio D, Centro de Negocios Puerta de Banús, N-340, Km 175, 29660 Nueva Andlucia

pharmacy, schools, restaurants, pizzerias, supermarkets, and public transport (bus/taxi) within 100 meters.

Highlights:

Corner semi-detached chalet

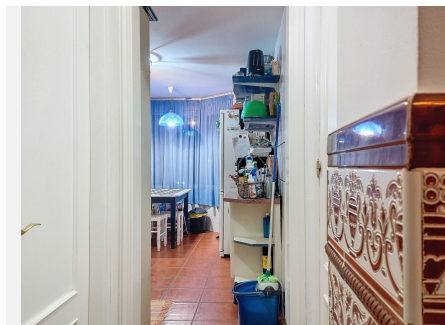
125 m² plot

Air conditioning and individual heating

Energy certificate: 32.9 kWh/m²/year | Emissions: 186.63 kg CO₂/m²/year

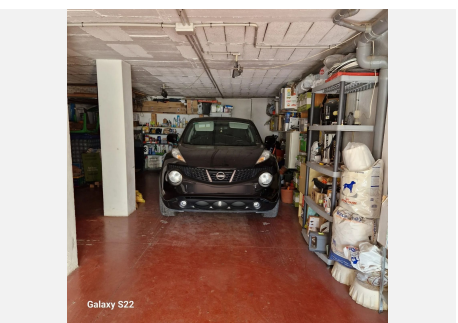
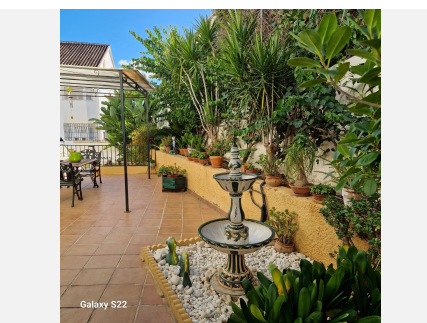
Costs: IBI €900/year | Community €65/month

A unique opportunity to live peacefully with everything at your fingertips, in one of the most sought-after areas of the Costa del Sol.



IDILIQ

ESTATES



IDILIQ

ESTATES

