



R5264038

 Guadalmina Alta

REF# R5264038 1.795.000 €

BEDS

5

BATHS

6

BUILT

333 m²

PLOT

811 m²

TERRACE

80 m²

Discover this exceptional southwest-facing villa, a stunning blend of contemporary elegance and modern comfort. Recently refurbished with top-quality materials, this exquisite home boasts a sleek design that perfectly complements its surroundings. Located alongside the Guadalmina Golf Course, it offers both tranquility and convenience, with shops, restaurants, and essential services just a short stroll away.

Spread across three levels, the villa offers generous living spaces designed for indoor-outdoor living. On the ground floor, a state-of-the-art kitchen with a stylish central island and breakfast bar connects directly to a covered front terrace, making it ideal for alfresco dining. A separate utility room with a private toilet leads to the rear garden. The open-plan living and dining area is bathed in natural light and features a cosy fireplace, with direct access to another covered terrace. This level also includes a versatile guest bedroom or home office with an ensuite bathroom.

The first floor features three beautifully appointed double bedrooms, each with its own ensuite bathroom and built-in wardrobes. The master suite enjoys direct access to a spacious terrace, offering breathtaking panoramic views.

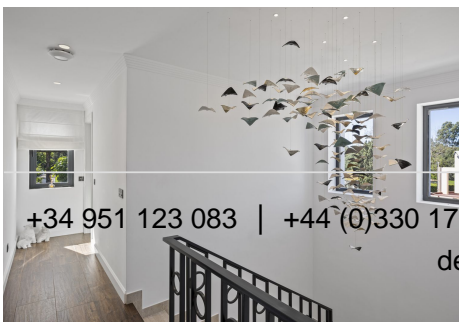
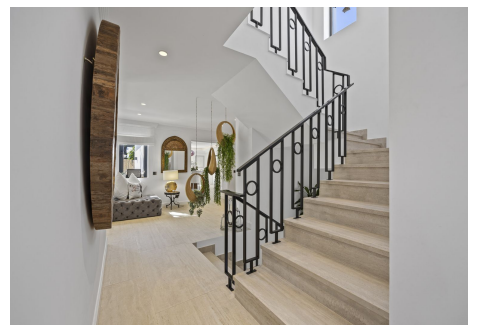
IDILIQ

ESTATES

On the lower level, a multi-functional leisure room with floor-to-ceiling windows opens onto yet another terrace. This space includes a fireplace and an additional bathroom, making it perfect for entertainment or relaxation.

The meticulously landscaped gardens frame a stunning private pool, creating a serene escape. Several outdoor seating areas and a built-in barbecue make this home perfect for hosting gatherings. A private driveway offers secure parking for two vehicles.

This sought-after community provides easy access to championship golf courses, sports clubs, and fine dining. Just 10 minutes from Puerto Banús, 15 minutes from Marbella's bustling center, and 40 minutes from Málaga International Airport, this prestigious neighbourhood is known for its refined ambiance and excellent infrastructure, including a well-equipped commercial center and top international schools.



+34 951 123 083 | +44 (0)330 179 8687 | info@idiliqestates.com Local 28, Edificio D, Centro de Negocios Puerta de Banús, N-340, Km 175, 29660 Nueva Andalucía

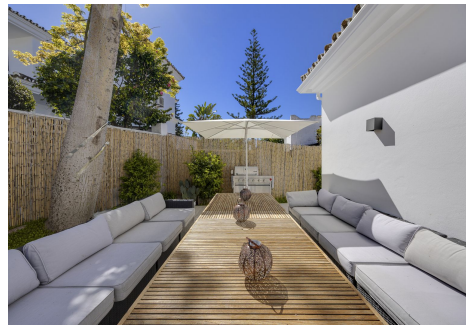
IDILIQ

ESTATES



IDILIQ

ESTATES



IDILIQ

ESTATES

