



R4790320

 Benalmadena Costa

REF# R4790320 1.975.000 €

BEDS

4

BATHS

4

BUILT

313 m<sup>2</sup>

TERRACE

59 m<sup>2</sup>

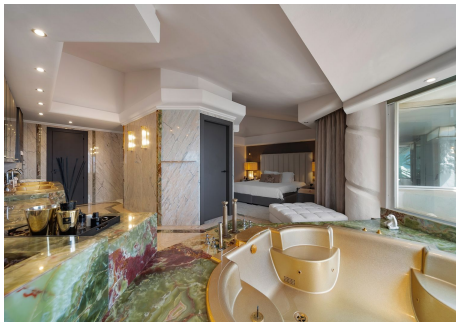
Welcome to this one-of-a-kind magnificent front line luxurious four-bedroom Duplex Penthouse in the world-famous Puerto Marina in Benalmádena Costa. This stunning property has been reformed to the highest style mixing modern with contemporary living, it is one of the best penthouses front line Beach that you will ever get the chance to buy. Entering the property, you have a spacious hallway that leads into a living space that will leave you speechless, the centre piece is a stunning spiral staircase which takes you up to the amazing private roof terrace. On this floor natural light flows into the property effortlessly and you will also find the sleek marble kitchen and breakfast bar, accompanied by an open plan dining space. This level also boasts spacious terraces where you and your family can sit and enjoy the tranquillity of this amazing property, with the most amazing open views looking over the Marina and to the sea. The property 4 double bedrooms, 3 with their own ensuite bathrooms, ensuring the privacy and comfort of all residents. The bathrooms are designed with sophisticated and modern finishes. The master suite is a marvel in its own right, with ample space and a walk-in closet that is sure to please design and style lovers. Light is a prominent feature of this penthouse, thanks to its corner location and southwest orientation. You will enjoy abundant natural light throughout the day, especially in the living room, where you can relax and admire the spectacular views of the sea. Imagine enjoying picturesque sunsets from the comfort of your home! One of

+34 951 123 083 | +44 (0)330 179 8687 | [info@idiliqestates.com](mailto:info@idiliqestates.com) Local 28, Edificio D, Centro de Negocios Puerta de Banús, N-340, Km 175, 29660 Nueva Andlucia

# IDILIQ

## ESTATES

the jewels of this property is its private solarium which is accessed from the living room. Here you can enjoy the sun all day long, relax in the chill-out area and take advantage of the outdoor kitchen to prepare delicious meals al fresco. This space is perfect for socializing with friends and family while taking in the stunning panoramic views. Includes furniture and garage space, it has everything to start enjoying now! The location in Puerto Marina, Benalmádena, adds even more value to this magnificent home. This exclusive coastal enclave allows you to enjoy the beauty of the Mediterranean Sea and be close to a wide range of services, such as haute cuisine restaurants, luxury boutiques and entertainment options. In short, this 4-bedroom corner penthouse with en-suite bathrooms is the epitome of luxury and exclusivity. From its luminosity and views of the sea to its master suite and private solarium, each detail has been carefully designed to provide you with an exceptional living experience. Welcome to your new dream home in Puerto Marina!



+34 951 123 083 | +44 (0)330 179 2687 | [info@idiliqestates.com](mailto:info@idiliqestates.com) Local 28, Edificio D, Centro de Negocios Puerta de Banús, N-340, Km 175, 29660 Nueva Andalucía



# IDILIQ

ESTATES

