



R5357170

 Benalmadena Costa

REF# R5357170 495.000 €

BEDS

3

BATHS

2

BUILT

90 m²

TERRACE

15 m²

Exceptional 2nd Line Beach Apartment with Sea Views & Two Private Terraces

A stunning 3-bedroom, 2-bathroom apartment on the 2nd line beach in Diana, Benalmadena Costa, and one that comes with a significant advantage: an existing tourist licence. Bright, airy, and beautifully maintained throughout, this exceptional property offers sea views, two private terraces, marble floors, and turnkey condition — ready to generate rental income from day one or enjoy as a holiday home or permanent residence on the Costa del Sol.

The large living and dining area opens directly onto a generous balcony with sea views, creating a seamless indoor-outdoor flow that perfectly captures the Mediterranean lifestyle. The separate kitchen is fully equipped. The spacious master bedroom benefits from direct balcony access, air conditioning, fitted wardrobes, and a beautifully renovated en-suite with walk-in shower. The two further bedrooms are also generously sized, each with fitted wardrobes. Air conditioning in the living room, marble floors throughout, and a guest bathroom with WC and sink complete this exceptional interior.

IDILIQ

ESTATES

Two private terraces, south-west and south-east facing, provide outstanding outdoor space for every time of day. The community is sought-after and well-maintained, with beautiful mature gardens and a communal pool. Close to Benalmadena Marina, on all main bus routes, and within easy reach of the beach, shops, restaurants, and amenities.

Key Features

3 Bedrooms | 2 Bathrooms

2nd line beach — Diana, Benalmadena Costa

Two private terraces — south-west and south-east facing

Large balcony with sea views from living area and master bedroom

Spacious open-plan living and dining area

Separate fully equipped kitchen

Marble floors throughout

Air conditioning — living room and master bedroom

Renovated master en-suite with large walk-in shower

Guest bathroom with WC and sink

Fitted wardrobes in all bedrooms

Communal gardens and swimming pool

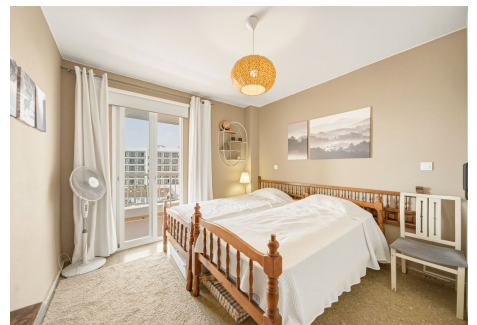
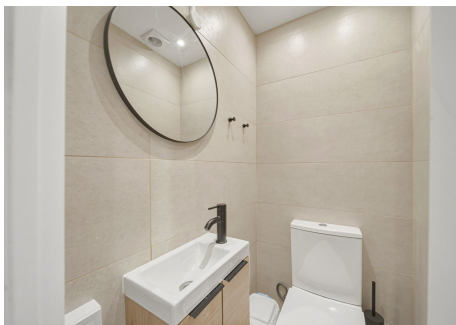
Close to Benalmadena Marina and all main bus routes

Excellent condition — great decor throughout

Turnkey ready

Tourist licence in place — immediate rental income potential

Viewing is very highly recommended.



IDILIQ

ESTATES

