



R4965367

📍 Nueva Andalucía

REF# R4965367 495.000 €

BEDS

2

BATHS

2

BUILT

137 m²

PLOT

50 m²

TERRACE

30 m²

Quaint, tranquil and delicately places within green countryside and under the watchful protective gaze of the iconic La Concha mountain, this ground floor apartment is in a perfect position. Tucked away from the busy world, its private garden is guarded by mature shrubbery either side of the garden, so your gaze is immediately drawn down towards the southerly sea views at the end.

Upon entering the property the hallway opens up to lead you in and through into the open plan styled living area. An elegant dining area sits adjacent to the living area, both being illuminated by swathes of natural light that floods in through the large terrace doors. The living area features modern styled fireplace for winter warmth whilst the sandy colored marble underfoot gives an impression of ongoing space.

The kitchen is fully fitted and modern, with oatmeal shaded floor tiles underfoot complementing the neutral toned kitchen units and countertops. Plenty of cupboards offer mountains of storage space keeping the appearance uncluttered. The kitchen leads out into an adjoining utility room with all major appliances neatly stored.

IDILIQ

ESTATES

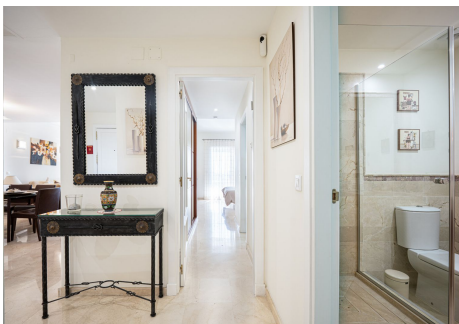
A sleek hallway leads through to two chic bedrooms, one which offers direct access out onto the south facing terrace. Both bedrooms are uniformly dressed in calming neutral palettes and offer fitted wardrobes for storage. There are two generously sized modern bathrooms, stately in their simplicity and refined in the use of minimalistic fittings.

The terrace that looks out over the Mediterranean on the horizon is sheltered yet still permits the sun to filter in, creating the opportunity to enjoy both shade and sun. A relaxed sofa area on one side is a perfect place to relax and with a cocktail whilst on the far side a dining area offers alfresco lunches for entertaining guests.

Recently renovated, this apartment is sold with private parking for 2 vehicles safely within the confines of the gated community.

In one of the most prestigious neighborhoods in the area, this property is a perfect example of Mediterranean living in a tranquil community surrounded by tree lined streets.

Set against rolling hills, yet in close proximity to top golf courses, first class amenities and renowned restaurants and bars, this is classical apartment in a classical village.



IDILIQ

ESTATES



IDILIQ

ESTATES

