

IDILIQ

ESTATES



R4874389

📍 Benahavís

REF# R4874389 3.950.000 €

BEDS

5

BATHS

6

BUILT

570 m²

PLOT

2473 m²

A vast wooden door opens widely to welcome you into the sanctuary, past the statues of 'Perros Fu', hand sculpted from volcanic rock that stand guard. The hallway pulls you in as if to never let you go. An ornate wooden door leads through to the first of the two master bedrooms, ingenious in its use of wood and natural stone. The ensuite bathroom is open, the shower cosy in its glass cubicle with an ornate sink opposite. The bed looks through the terrace doors that offer access to the oasis outside. A side door takes you through into the walk in dressing room, sleek with illuminated glass doors and furnished with bespoke furniture. Another door leads through to the spa zone where rejuvenation can begin. Enjoy a full massage, recline in a sauna for 8 people or submerge yourself in the unique 1500 yr old bathtub that stands proud under a skylight, rays of light stream down highlighting its carved granite tub. Emerging through carved wood doors you find the open plan living room and kitchen both enjoying access into the gardens and infinity style swimming pool. The lounge floor is a sublime merging of parquet wood and an opaque glass section giving the impression of water underfoot. A bioethanol fireplace sublimely acts as a room divider. The kitchen is a masterpiece and exhibits the slick use of natural wood with stainless steel. Resplendent with a bespoke island unit taking centerstage, it offers seating around one circular end whilst inviting any chef in to show off their skills. This feels truly like the heart of the home. The second master bedroom is just around the corner

+34 951 123 083 | +44 (0)330 179 8687 | info@idiliqestates.com Local 28, Edificio D, Centro de Negocios Puerta de Banús, N-340, Km 175, 29660 Nueva Andlucia

from the living room. High ceilinged and lit with soft LED lighting, this room has a boyish feel to it - fifties styling creating a homely effect. An open plan bathroom on one side includes a glass surrounded walk in shower and gilded sink unit. On the upper floor is a fully equipped gym with views across to the mountains and over the gardens. The lower floor holds further surprises. A utility room reveal double sinks, offers plenty of cupboard space and shelving, simple concrete walls stand tall, in juxtaposition with the understated parquet flooring, whilst a chill out chair languishes in one corner offering a place of repose. Two bedrooms lead off from the hall, both invisibly illuminated by LED lighting and exhibiting natural concrete merging with wood flourishes and open style bathrooms. Plush furnishings sit in stark contrast to the stone and wood, inviting you in to lie back and unwind. A cinema room features with a bar and guest toilet, all acoustically designed so sound reverberates off the walls for a totally submersive experience. Hidden behind an end wooden wall is a panic room, fully fitted to sleep 12 people, self sufficient including a kitchen, dining area and a bathroom. From this fortified shelter, security cameras can be accessed and in the event of a loss of power this zone remains completely connected. Out into the gardens this exquisite villa reveals its true self through its flora and fauna, inextricably united by your senses. A hybrid grass only needs cutting twice a year delicately caresses underfoot, a Japanese stone garden offers a sense of strength, an aviary shaped olive trees adds a sense of freedom, and a fruit garden bears tomatoes, bananas, avocados and pomegranates. In the centre an ancient Bali temple sits within a fish pond, linked by a wooden bridge, offering respite from the heat of the day whilst taking shelter under the trees that tower overhead. The infinity pool stretches out, its loungers submerged at one end with Buddha at the other, spiritually perceptive and ever present. A guest house sits adjacent to the pool, fully fitted with a kitchenette, bathroom, bedroom and chill out area. The far side of the house reveals a final nod to the ongoing theme of life, rebirth and spirituality that flows and ebbs through this property - the 1000 year old Algarrobo tree, affectionally known as 'Grandfather'. He is monumental and regal, his branches sprouting new life every 80 years. He leaves you breathless. With the personal emblem of the villa featuring throughout the house, this property will leave you speechless. Immersed in a bubble of serenity and peace from the moment you enter, silence is profound throughout the villa, as is an overwhelming feeling of being at one with the universe. With first class installations including water tanks, 42 solar panels, a military style security system, aerothermics, and a water purifying system, this property is a haven that offers an unspoken purification of the mind along with an innate sense of peace. Simply put, you enter and you may unwillingly leave, but this home will inevitably become part of your soul.

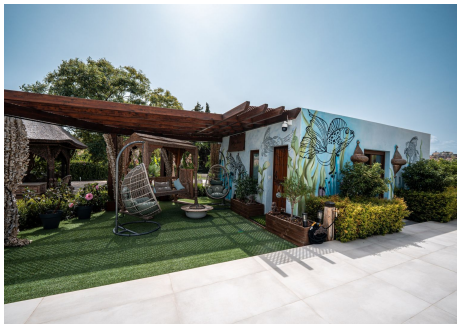
IDILIQ

ESTATES



IDILIQ

ESTATES



IDILIQ

ESTATES

