

IDILIQ

ESTATES



R4783900

 The Golden Mile

REF# R4783900 3.200.000 €

BEDS

10

BATHS

7

BUILT

470 m²

PLOT

122 m²

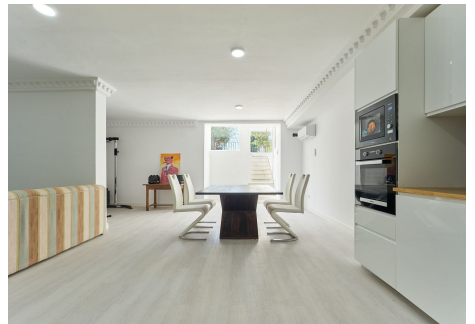
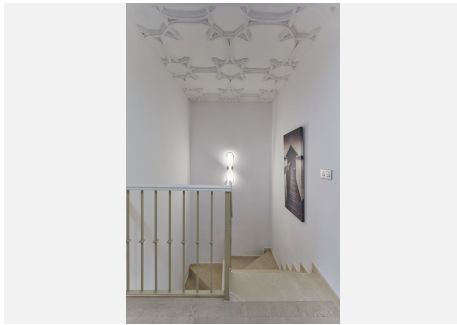
TERRACE

110 m²

Live your best life in Marbella's Golden Mile Just 100 meters from the world-famous Marbella Club Hotel and 400 meters from the beach, this independant Villa is situated in the heart of Marbella's luxurious Golden Mile. Step outside your door to indulge in the opulence of Puente Romano's Michelin-star restaurants, world-class tennis courts, and Marbella's sandy beaches. Marbella's most renowned Michelin-starred seafood restaurant is just 50 meters away, with other Dani García establishments within walking distance. The villa is also conveniently located within a five-minute drive of Puerto Banus and Marbella's Old Town. Nestled in a small community with expansive grounds, this 8 bedroom + 2 bonus rooms, plus a self contained suite, Villa features a double-length swimming pool, a paddle court, and stunning views of both the sea to the south and La Concha mountain to the north. Inside, you'll find marble floors, central air conditioning and heating, a high bar, and a terrace perfect for entertaining guests. The property includes four underground parking spaces and two storage rooms. Golf enthusiasts will appreciate being within a ten-minute drive of three of Costa del Sol's best golf clubs: Aloha, Las Brisas, and Los Naranjos. Additionally, the British International School of Marbella is just four minutes away.

IDILIQ

ESTATES



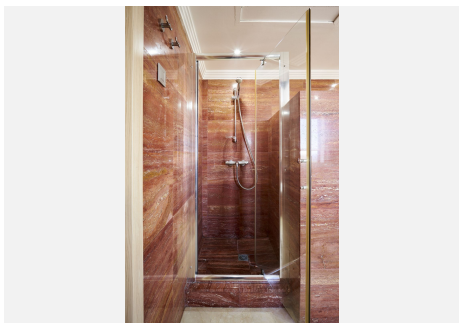
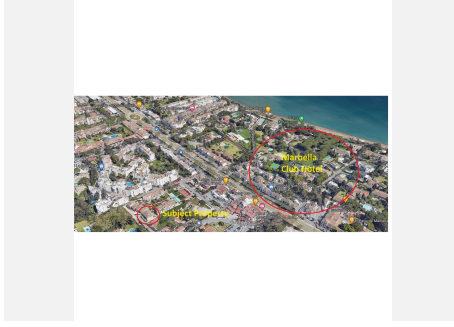
IDILIQ

ESTATES



IDILIQ

ESTATES



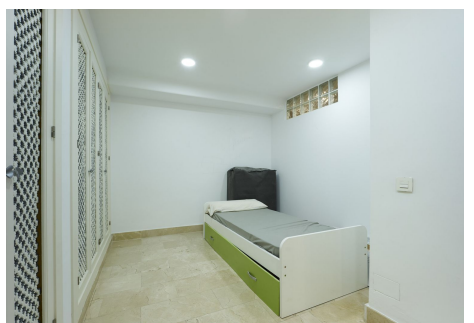
IDILIQ

ESTATES



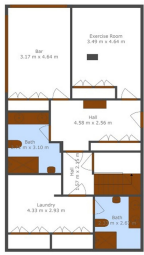
IDILIQ

ESTATES



IDILIQ

ESTATES



TOTAL: 209 m²
 Netto Covered: 209 m² (Floor, Terrace, Balcony, Stairs, Lift, etc.)
 EXCLUDED AREA: COVERED: 0 m², UNCOVERED: 11 m² (TERRACE, BALCONY, STAIRS, LIFT, etc.)
 BUILDING: 209 m²



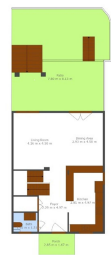
TOTAL: 209 m²
 Netto Covered: 209 m² (Floor, Terrace, Balcony, Stairs, Lift, etc.)
 EXCLUDED AREA: COVERED: 0 m², UNCOVERED: 11 m² (TERRACE, BALCONY, STAIRS, LIFT, etc.)
 BUILDING: 209 m²



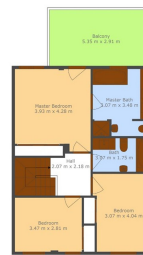
TOTAL: 209 m²
 Netto Covered: 209 m² (Floor, Terrace, Balcony, Stairs, Lift, etc.)
 EXCLUDED AREA: COVERED: 0 m², UNCOVERED: 11 m² (TERRACE, BALCONY, STAIRS, LIFT, etc.)
 BUILDING: 209 m²



TOTAL: 209 m²
 Netto Covered: 209 m² (Floor, Terrace, Balcony, Stairs, Lift, etc.)
 EXCLUDED AREA: COVERED: 0 m², UNCOVERED: 11 m² (TERRACE, BALCONY, STAIRS, LIFT, etc.)
 BUILDING: 209 m²



TOTAL: 209 m²
 Netto Covered: 209 m² (Floor, Terrace, Balcony, Stairs, Lift, etc.)
 EXCLUDED AREA: COVERED: 0 m², UNCOVERED: 11 m² (TERRACE, BALCONY, STAIRS, LIFT, etc.)
 BUILDING: 209 m²



TOTAL: 209 m²
 Netto Covered: 209 m² (Floor, Terrace, Balcony, Stairs, Lift, etc.)
 EXCLUDED AREA: COVERED: 0 m², UNCOVERED: 11 m² (TERRACE, BALCONY, STAIRS, LIFT, etc.)
 BUILDING: 209 m²