



R5232535

📍 Marbella

REF# R5232535 495.000 €

BEDS

2

BATHS

2

BUILT

84 m²

TERRACE

31 m²

Apartment situated in a very central location within Nueva Andalucia and within walking distance of restaurants, shops, bus stop, Puerto Banus and the beach. Golf courses, tennis clubs and gymnasiums are also within easy reach.

The apartment is in a gated community and is in a high location within the complex giving fantastic views of the sea, the valley and "La Concha" mountain.

The distribution is easy and practical with the kitchen on the right as one enters, and the living-dining room and terrace on the left.

The terrace has 31 m² so there is space for seating and dining while enjoying the magnificent views during the day and the night.

The bedrooms are alongside with one bathroom with access from the passageway so it may be used by guests and the other bathroom is ensuite in the master bedroom.

+34 951 123 083 | +44 (0)330 179 8687 | info@idiliqestates.com Local 28, Edificio D, Centro de Negocios Puerta de Banús, N-340, Km 175, 29660 Nueva Andlaucia

IDILIQ

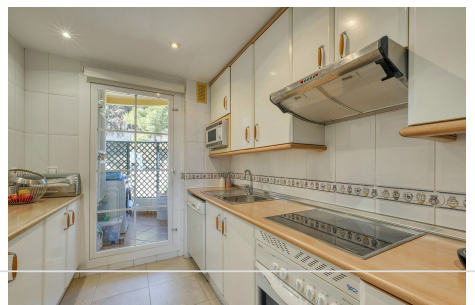
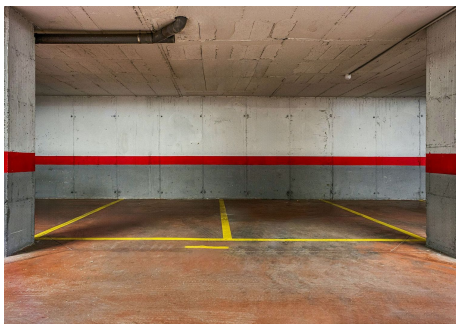
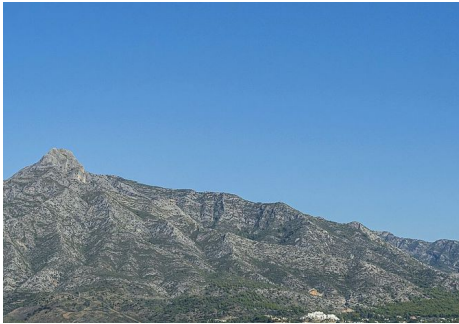
ESTATES

The floor has been changed by a new floor and a heating system by gas has been installed. Also new showers have been made in the bathrooms.

The apartment is sold furnished and includes an underground garage space plus a store room of approximately 8 m2.

In the community are two pools and paddle tennis courts also.

This is a great opportunity as apartments in this block rarely come on the market.



IDILIQ

ESTATES

