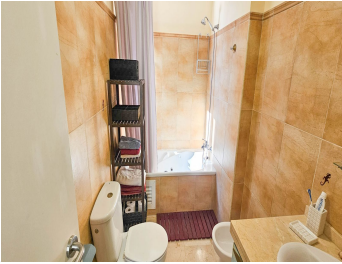
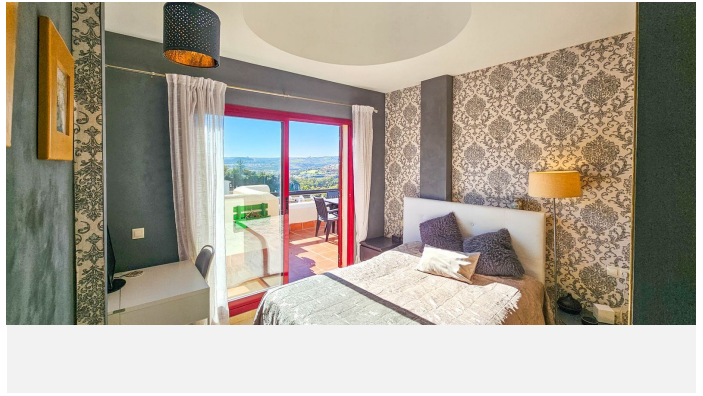


IDILIQ

ESTATES



R4624540

📍 Casares Playa

REF# R4624540 260.000 €

BEDS

2

BATHS

2

BUILT

83 m²

TERRACE

35 m²

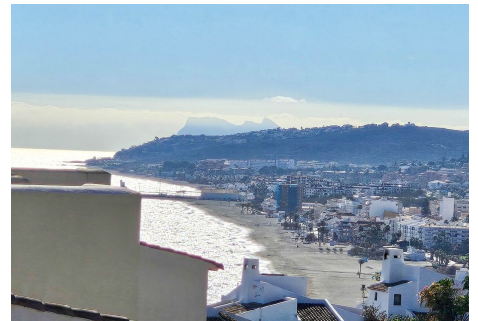
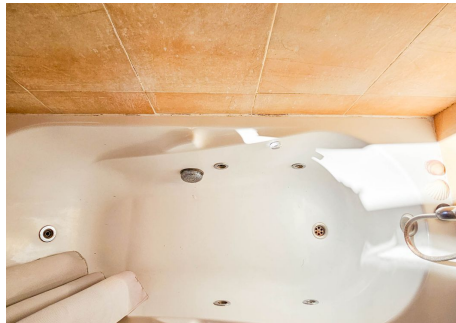
!!!The staircase up to the top level isnt suitable for elderly people !!!!! Welcome to this exquisite penthouse duplex, where luxurious living meets modern elegance. As you step onto the bottom level, you are greeted by an open and inviting atmosphere. The semi-open kitchen, adorned with state-of-the-art appliances and sleek countertops, seamlessly blends with the dining area, creating a perfect space for culinary delights and social gatherings. The dining area flows effortlessly into the living room, where plush furnishings and tasteful decor invite you to relax and unwind. Large windows allow natural light to fill the space, and sliding glass doors lead you onto a charming terrace. This outdoor haven is adorned with comfortable seating, making it an ideal spot to enjoy a morning coffee or an evening sunset. Adjacent to the living area, you'll discover a cozy room, perfect for guests or use as a study, and a well-appointed bathroom that exudes both style and functionality. Ascending to the top level, you'll find the crown jewel of this penthouse – the master bedroom. A sanctuary of tranquility, the master bedroom boasts spaciousness and sophistication. The attached jacuzzi bathroom is a retreat in itself, featuring luxurious fixtures and a serene ambiance for ultimate relaxation. This outdoor oasis offers panoramic views that stretch as far as the eye can see. Whether you're enjoying a private moment under the stars or hosting a soirée with friends, the roof terrace is a breathtaking extension of your living space. This penthouse duplex seamlessly combines modern design with

+34 951 123 083 | +44 (0)330 179 8687 | info@idiliqestates.com Local 28, Edificio D, Centro de Negocios Puerta de Banús, N-340, Km 175, 29660 Nueva Andlucia

IDILIQ

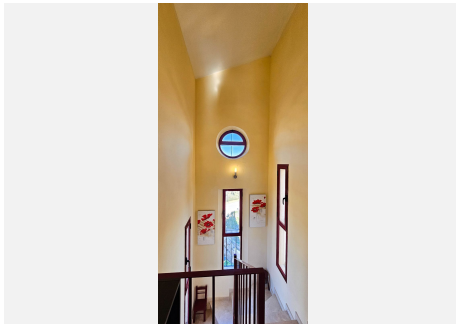
ESTATES

functionality, creating an unparalleled living experience. From the semi-open kitchen to the master suite and the panoramic roof terrace, every detail has been carefully curated to offer a lifestyle of comfort and sophistication. Welcome home to a world of luxury and panoramic beauty.



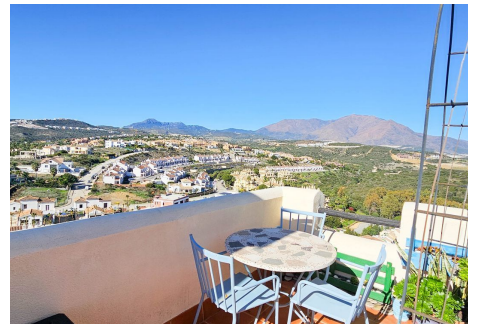
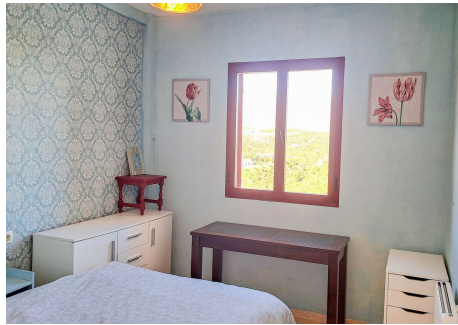
IDILIQ

ESTATES



IDILIQ

ESTATES



IDILIQ

ESTATES

