



R5195386

📍 Manilva

REF# R5195386 340.000 €

BEDS

3

BATHS

2

BUILT

111 m²

TERRACE

103 m²

Corner Townhouse with Panoramic Sea, Vineyard, and Mountain Views – Manilva, Costa del Sol

This charming corner townhouse combines space, natural light, and spectacular views in a privileged location, close to the picturesque village of Manilva and just a few minutes from the beaches of La Duquesa. Designed to enjoy the Mediterranean lifestyle, it offers generous interior and exterior areas, perfect for year-round living or as a second home.

With an interior area of 111 m² and a spacious 103 m² terrace, the property is distributed over two floors and features three bedrooms, two bathrooms, and a guest toilet. The living-dining room with fireplace opens directly onto the main terrace, creating a bright and welcoming space thanks to its east-south orientation.

The open-plan kitchen is fully equipped with new appliances (oven, dishwasher, and air conditioning). Outside, a pergola with an electric roof allows for year-round use of the terrace, whether under the sun or in cooler evenings.

IDILIQ

ESTATES

The property also includes a private parking space, a storage room, marble floors, and is in excellent condition.

Located in a peaceful, well-maintained complex, it offers a communal pool, landscaped gardens, and nearby sports facilities such as paddle and tennis courts.

Its location is unbeatable:

Less than 5 minutes by car from La Duquesa Marina and the beaches.

10 minutes from Estepona.

20 minutes from Sotogrande and its prestigious golf courses.

1 hour from Málaga International Airport and 35 minutes from Gibraltar Airport.

Enjoying panoramic views of the sea, mountains, and vineyards, this property offers a perfect blend of rural charm and coastal convenience.

An ideal home for those seeking peace, quality of life, and breathtaking views on the Costa del Sol.



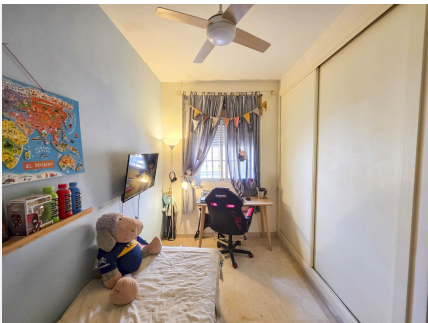
IDILIQ

ESTATES



IDILIQ

ESTATES



IDILIQ

ESTATES

