



R5384209

 Sierrezuela

REF# R5384209 1.390.000 €

BEDS

4

BATHS

4

BUILT

606 m<sup>2</sup>

PLOT

1000 m<sup>2</sup>

**\*\*Single-family house for sale\*\***

We present this magnificent single-family house with 564 m<sup>2</sup> of built area, a spacious and versatile property ideal for families seeking comfort and room to breathe. Distributed across 4 bedrooms and 4 bathrooms, this home offers the space needed for each family member to enjoy their own privacy.

Built in 2006 and maintained in excellent condition, the property combines structural solidity with modern comfort. It has exposure in all directions, allowing excellent natural light throughout the day. Built-in wardrobes maximize storage, while the additional storage room provides extra space for belongings.

The house features a large terrace and balcony, perfect spaces for enjoying the outdoors, relaxing, or sharing moments with family and friends. The climate control system, with a heat pump, ensures a pleasant temperature in both winter and summer, providing comfort all year round.

# IDILIQ

ESTATES

The property includes a parking space, making access and secure parking more convenient. Its good state of preservation makes it a solid investment, ready to be occupied without the need for major renovations.

Nearby, there are various services and points of interest. Within about 8–15 minutes on foot, you can access quality educational centers for children. Around 10–18 minutes' walk away, you will find healthcare centers and pharmacies. The area also offers local shops, supermarkets, and convenience stores within 5–12 minutes on foot. In addition, there are public transport options, restaurants, and cafés nearby, creating a complete and well-connected environment.

This house represents an exceptional opportunity for those looking for a spacious, well-located home in perfect condition. Do not hesitate to contact us to arrange a viewing.



+34 951 123 083 | +44 (0)330 179 8687 | [info@idiliqestates.com](mailto:info@idiliqestates.com) Local 28, Edificio D, Centro de Negocios Puerta de Banús, N-340, Km 175, 29660 Nueva Andalucía

# IDILIQ

ESTATES



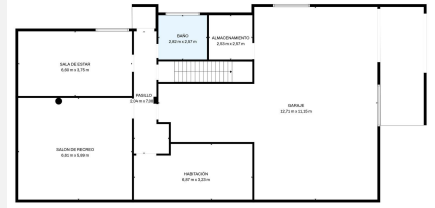
# IDILIQ

ESTATES

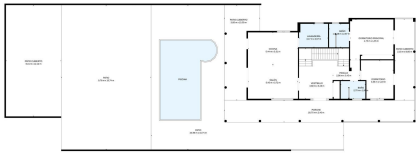


# IDILIQ

## ESTATES



**TOTAL: 828 m<sup>2</sup>**  
 Planta Baja: 112 m<sup>2</sup>, 1<sup>er</sup> piso: 258 m<sup>2</sup>, 2<sup>o</sup> piso: 85 m<sup>2</sup>, 3<sup>er</sup> piso: 0 m<sup>2</sup>  
 Áreas excluidas: GARAJE: 88 m<sup>2</sup>, ALMACENAMIENTO: 6 m<sup>2</sup>, PATIO CUBIERTO: 121 m<sup>2</sup>,  
 PISCINA: 122 m<sup>2</sup>, TERRAZA: 45 m<sup>2</sup>, MURDO: 38 m<sup>2</sup>  
 BALCON: 122 m<sup>2</sup>, TERRAZA: 53 m<sup>2</sup>, MURDO: 38 m<sup>2</sup>



**TOTAL: 828 m<sup>2</sup>**  
 Planta Baja: 112 m<sup>2</sup>, 1<sup>er</sup> piso: 258 m<sup>2</sup>, 2<sup>o</sup> piso: 85 m<sup>2</sup>, 3<sup>er</sup> piso: 0 m<sup>2</sup>  
 Áreas excluidas: GARAJE: 88 m<sup>2</sup>, ALMACENAMIENTO: 6 m<sup>2</sup>, PATIO CUBIERTO: 121 m<sup>2</sup>,  
 PISCINA: 122 m<sup>2</sup>, TERRAZA: 45 m<sup>2</sup>, MURDO: 38 m<sup>2</sup>  
 BALCON: 122 m<sup>2</sup>, TERRAZA: 53 m<sup>2</sup>, MURDO: 38 m<sup>2</sup>



**TOTAL: 828 m<sup>2</sup>**  
 Planta Baja: 112 m<sup>2</sup>, 1<sup>er</sup> piso: 258 m<sup>2</sup>, 2<sup>o</sup> piso: 85 m<sup>2</sup>, 3<sup>er</sup> piso: 0 m<sup>2</sup>  
 Áreas excluidas: GARAJE: 88 m<sup>2</sup>, ALMACENAMIENTO: 6 m<sup>2</sup>, PATIO CUBIERTO: 121 m<sup>2</sup>,  
 PISCINA: 122 m<sup>2</sup>, TERRAZA: 45 m<sup>2</sup>, MURDO: 38 m<sup>2</sup>  
 BALCON: 122 m<sup>2</sup>, TERRAZA: 53 m<sup>2</sup>, MURDO: 38 m<sup>2</sup>



**TOTAL: 828 m<sup>2</sup>**  
 Planta Baja: 112 m<sup>2</sup>, 1<sup>er</sup> piso: 258 m<sup>2</sup>, 2<sup>o</sup> piso: 85 m<sup>2</sup>, 3<sup>er</sup> piso: 0 m<sup>2</sup>  
 Áreas excluidas: GARAJE: 88 m<sup>2</sup>, ALMACENAMIENTO: 6 m<sup>2</sup>, PATIO CUBIERTO: 121 m<sup>2</sup>,  
 PISCINA: 122 m<sup>2</sup>, TERRAZA: 45 m<sup>2</sup>, MURDO: 38 m<sup>2</sup>  
 BALCON: 122 m<sup>2</sup>, TERRAZA: 53 m<sup>2</sup>, MURDO: 38 m<sup>2</sup>



**TOTAL: 828 m<sup>2</sup>**  
 Planta Baja: 112 m<sup>2</sup>, 1<sup>er</sup> piso: 258 m<sup>2</sup>, 2<sup>o</sup> piso: 85 m<sup>2</sup>, 3<sup>er</sup> piso: 0 m<sup>2</sup>  
 Áreas excluidas: GARAJE: 88 m<sup>2</sup>, ALMACENAMIENTO: 6 m<sup>2</sup>, PATIO CUBIERTO: 121 m<sup>2</sup>,  
 PISCINA: 122 m<sup>2</sup>, TERRAZA: 45 m<sup>2</sup>, MURDO: 38 m<sup>2</sup>  
 BALCON: 122 m<sup>2</sup>, TERRAZA: 53 m<sup>2</sup>, MURDO: 38 m<sup>2</sup>