



## HOUSE 3 BEDROOMS 5 BATHROOMS IN ATALAYA

📍 Atalaya

REF# R5286979 1.990.000 €

BEDS

3

BATHS

5

BUILT

356 m<sup>2</sup>

PLOT

490 m<sup>2</sup>

TERRACE

50 m<sup>2</sup>

Exclusive Modern Frontline Golf Villa | El Campanario

This exceptional new-build modern villa, ideally located frontline to El Campanario Golf, offering an outstanding blend of luxury, space, and contemporary elegance.

The villa features 3 spacious bedrooms and 5 luxurious bathrooms, finished to the highest standards with high-end design, bespoke furniture, and premium materials throughout. Expansive floor-to-ceiling windows ensure abundant natural light, creating bright, open interiors and a seamless connection to the outdoor areas.

Key Features:

- Prime frontline golf position at El Campanario Golf & Country House
- 3 bedrooms and 5 bathrooms
- Luxury high-end design with carefully selected furniture
- Large windows and open-plan spaces for exceptional natural light

+34 951 123 083 | +44 (0)330 179 8687 | [info@idiliqestates.com](mailto:info@idiliqestates.com) Local 28, Edificio D, Centro de Negocios Puerta de Banús, N-340, Km 175, 29660 Nueva Andlucia

# IDILIQ

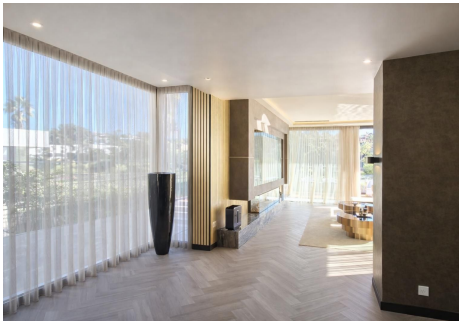
ESTATES

- Private swimming pool with panoramic golf course views
- Rooftop terrace / solarium, ideal for relaxation and entertaining
- Private sauna for a complete wellness experience
- Dedicated laundry room and storage room
- Private parking for two cars

## Location Highlights:

- Situated directly next to El Campanario Golf Club
- Only minutes from Puerto Banús
- Close to beaches, restaurants, shops, international schools, and all amenities

This villa is a rare opportunity to acquire a contemporary frontline golf residence in one of the most desirable areas of the Costa del Sol—perfect as a primary home, luxury holiday retreat, or high-end investment.



# IDILIQ

ESTATES

