

# IDILIQ

ESTATES



R5411632

📍 Benalmadena

REF# R5411632 4.600.000 €

BEDS

8

BATHS

8

BUILT

584 m<sup>2</sup>

PLOT

2600 m<sup>2</sup>

TERRACE

350 m<sup>2</sup>

Exclusive Renovated Cortijo-Style Estate in Rancho Domingo, Benalmádena | €4,600,000

Nestled in the prestigious residential enclave of Rancho Domingo, this exceptional south-facing villa blends timeless Andalusian character with modern luxury and complete privacy. Occupying a generous 2,600 m<sup>2</sup> plot and enjoying breathtaking sea, mountain, and open views, the property offers an exclusive lifestyle just minutes from the beaches, Benalmádena Pueblo, and all essential amenities.

Fully renovated to the highest standards, the villa offers 584 m<sup>2</sup> of elegant living space distributed over two floors. With eight spacious bedrooms and eight bathrooms, it has been designed to provide both refined family living and effortless entertaining. A striking cortijo-style entrance creates a memorable arrival, while high-quality furnishings throughout the home enhance its sophisticated atmosphere.

The bright interiors benefit from south, southwest, and west orientations, allowing natural light to flood the living spaces while showcasing panoramic views of the Mediterranean coastline and surrounding mountains. Modern comfort is ensured with water-based underfloor heating, a central cooling system, and

+34 951 123 083 | +44 (0)330 179 8687 | [info@idiliqestates.com](mailto:info@idiliqestates.com) Local 28, Edificio D, Centro de Negocios Puerta de Banús, N-340, Km 175, 29660 Nueva Andalucía

# IDILIQ

ESTATES

independent climate control in each room.

An independent guest apartment provides additional flexibility for family, visitors, or staff, while the beautifully landscaped gardens offer complete seclusion with no overlooking neighbours. A charming vegetable garden adds a touch of Mediterranean country living, creating a peaceful retreat that feels worlds away from the bustle of the coast. Separate access for pool and garden maintenance ensures maximum privacy and convenience.

Additional features include solar panels, a fully fitted kitchen, central heating and air conditioning, a garage for three cars, and additional outdoor parking for three more vehicles. Every detail has been carefully considered to create a residence that combines traditional elegance with contemporary efficiency.

This remarkable property presents a rare opportunity to acquire a private luxury estate in one of Benalmádena's most sought-after residential areas, offering outstanding views, exceptional quality, and a privileged Costa del Sol lifestyle.

Contact us today to arrange a private viewing.



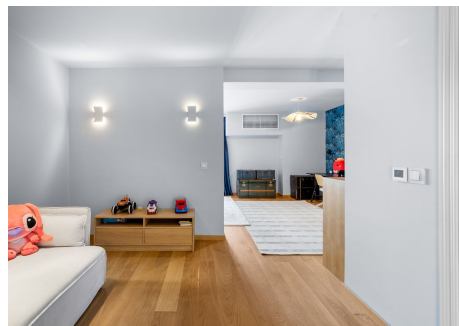
# IDILIQ

ESTATES



# IDILIQ

ESTATES



# IDILIQ

ESTATES



# IDILIQ

ESTATES



# IDILIQ

ESTATES

