



R4290895

📍 Torremuelle

REF# R4290895 1.550.000 €

BEDS

5

BATHS

5

BUILT

532 m<sup>2</sup>

PLOT

977 m<sup>2</sup>

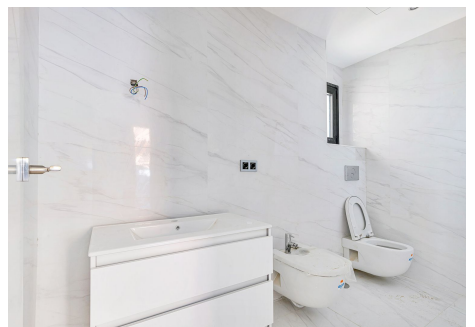
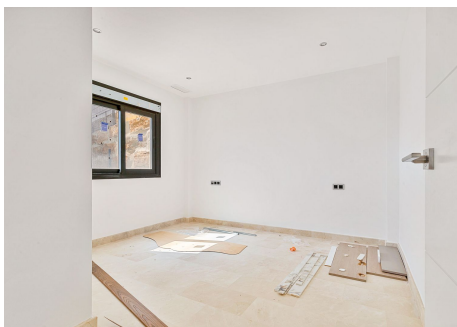
TERRACE

161 m<sup>2</sup>

This wonderful newly built Villa, with absolute sea views from any of its floors. It consists of three bedrooms on the upper floor, and another master bedroom on the top floor with en-suite bathroom. On the main floor there is a fully equipped kitchen with top quality materials, a large living-dining room leading to a large terrace with stunning views to the sea and to the outdoor-private swimming pool. In the basement there is a large heated swimming pool and a jacuzzi, with a complete bathroom and an area prepared for a sauna. The whole house can be accessed by a lift or by practical marble stairs. The garage area with capacity for two cars, games area, laundry, office and wine cellar. The villa has solar panels, air conditioning hot/cold, underfloor heating, electric blinds, fitted wardrobes with high quality wood panelling. Located just 4 minutes from one of the beaches of Benalmádena and with all public services within walking distance, train station, schools, bus stop, etc...

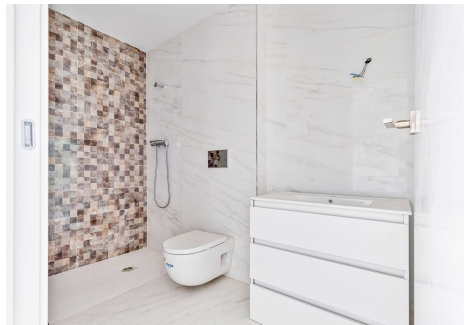
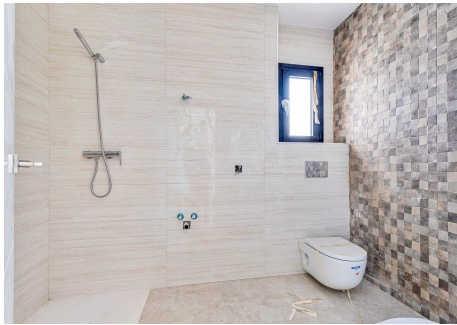
# IDILIQ

ESTATES



# IDILIQ

ESTATES



# IDILIQ

ESTATES

