

# IDILIQ

ESTATES



R4980256

📍 Benahavís

REF# R4980256 335.000 €

BEDS

3

BATHS

2

BUILT

202 m<sup>2</sup>

TERRACE

45 m<sup>2</sup>

This charming 3-bedroom, 2-bathroom duplex apartment offers the perfect space to enjoy tranquility and nature. The spacious terraces on two levels provide breathtaking panoramic views of the mountains and forest, making it an ideal place to relax and take in the surroundings. The fully equipped kitchen adds convenience, and the property also includes an underground parking space and storage room.

Located in an exclusive gated community with 24-hour security and concierge service, Parque Botánico boasts incredible facilities: large outdoor swimming pools, an indoor heated pool, a full gym, playground areas, and beautiful gardens. Sports enthusiasts will appreciate the tennis, padel, and squash courts, along with saunas to unwind after a workout.

The south-southwest orientation of the property offers stunning views from its cozy terrace, perfect for enjoying the Mediterranean climate. The location is unbeatable, surrounded by nature yet just a 15-minute drive from Guadalmansa Beach, El Saladillo, Villa Padierna Golf Club, and La Resina Golf & Country Club. Additionally, it offers easy access to all necessary services, including shopping centers, supermarkets,

+34 951 123 083 | +44 (0)330 179 8687 | info@idiliqestates.com Local 28, Edificio D, Centro de Negocios Puerta de Banús, N-340, Km 175, 29660 Nueva Andalucía

# IDILIQ

ESTATES

international schools, and restaurants.

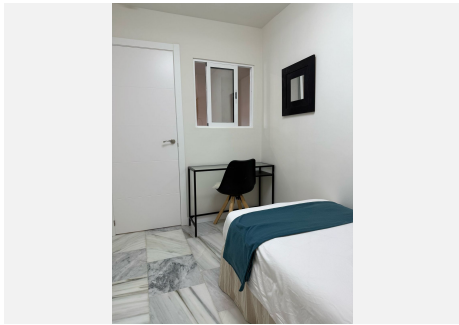
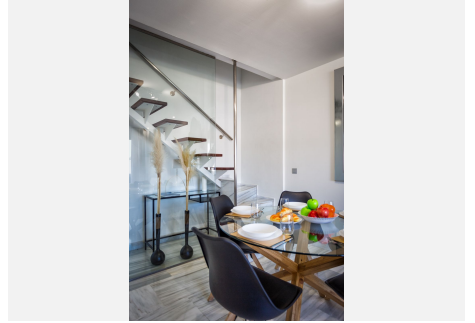
A perfect place to live in nature without sacrificing modern comforts and amenities!





# IDILIQ

ESTATES





# IDILIQ

ESTATES

