



R4370392

📍 El Chaparral

REF# R4370392 760.000 €

BEDS

4

BATHS

4.5

BUILT

223 m²

PLOT

876 m²

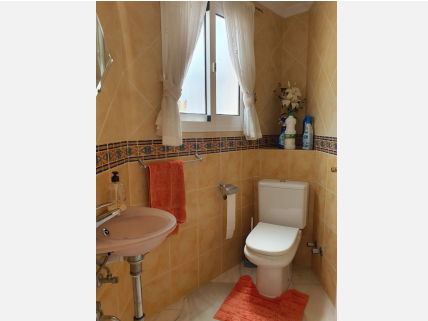
Villa in the Chaparral. Impressive residence that combines style and comfort in a privileged location. With its four spacious and bright bedrooms all with en-suite bathrooms, this villa offers an ideal space for large families or those looking to have extra space for guests. It has a garage plus 2 parking spaces inside the property. The south and west orientation of the villa allows you to enjoy impressive views of the golf course and partial views of the sea, providing a calm and relaxing environment. The villa is also equipped with a fireplace, air conditioning, barbecue to enjoy outdoor meals with friends and family. It has beautiful gardens, a chill out area and a heated pool, perfect to enjoy all year round. Solar panels contribute to the energy efficiency of the property, reducing energy costs. The villa is located in a popular urbanization, within walking distance of restaurants and the typical town of La Cala, which facilitates access to services, amenities and the beach. The well-maintained property, along with the marble floors and laundry facilities, make this villa an ideal choice for those looking for comfortable living that is easy to maintain. Villa, Frontline Golf, Furnished, Fitted Kitchen, Parking: Garage, Pool: Private, Garden: Private, Facing: Southwest Views: Garden, Golf, Partial Sea, Pool. Features Air Conditioning Hot/Cold, Alarm System, Barbecue, Close to all Amenities, Conveniently Situated for Golf, Double Glazing, En suite bathroom, Floor Heating in Bathrooms, Frontline Golf, Garage, Garden, Heated Pool, Ideal Family Home, Investment Property, Laundry room,

+34 951 123 083 | +44 (0)330 179 8687 | info@idiliqestates.com Local 28, Edificio D, Centro de Negocios Puerta de Banús, N-340, Km 175, 29660 Nueva Andalucía

IDILIQ

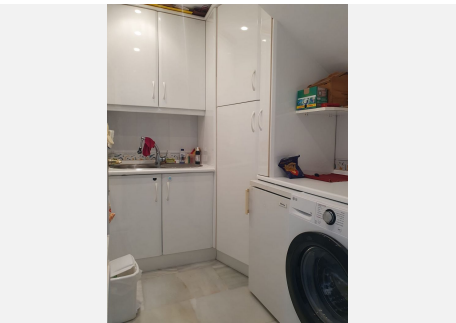
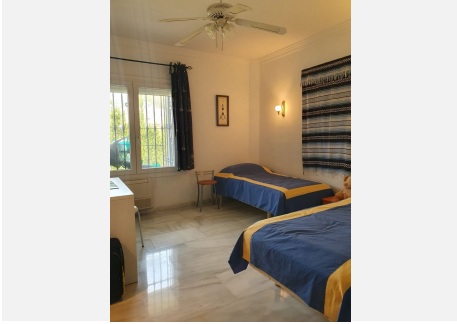
ESTATES

Marble Floors, Pool, Popular Urbanisation, Private pool, Residential Location, Solar Panels, Space for Garage, Swimming Pool, Walking distance to rest., Walking distance to shops, Walking distance to t. centre, Well maintained community.



IDILIQ

ESTATES



IDILIQ

ESTATES

