



HOUSE 4 BEDROOMS 4 BATHROOMS IN EL PADRON

 El Padron

REF# R4686271 1.450.000 €

BEDS

4

BATHS

4

BUILT

450 m²

PLOT

3500 m²

Villa in El Padron, an idyllic suburb of Estepona.

The villa benefits from an elevated position with stunning sea and mountain views, just one kilometre from the beach. Furthermore, the Kempinski resort hotel at the beach brings splendour to the rustic ambience of El Padron – blending country life with luxury facilities.

The estate consists of a flat private plot of 3,500 sq m, a villa and a swimming pool with an adjacent pool house. Next to the house is a private well with drinking water that fully meets all domestic water needs throughout the year.

An automatic gate opens the entrance from the street into a wide garden. The paved path leads to a spacious garage with a workshop at the ground level. A few steps up we are on the covered terrace with a wonderful view of the garden and the sea. In addition, a spacious swimming pool with a pool house and barbecue area provides an excellent place for relaxation. Perfect for dinner parties under the summer night sky.

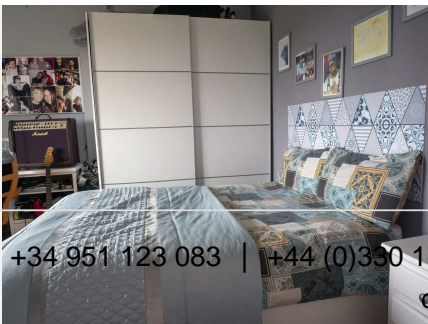
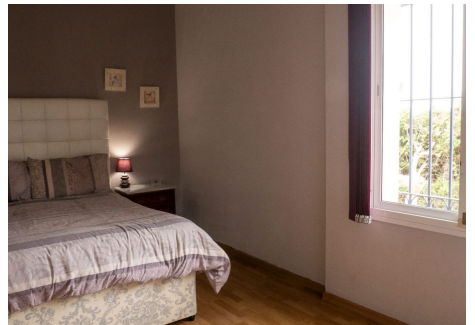
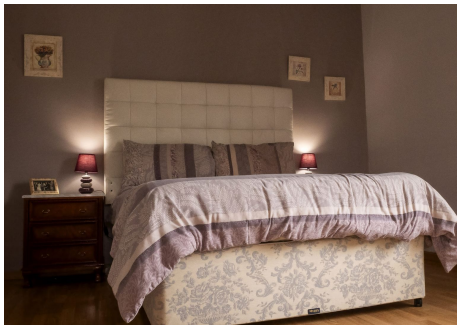
IDILIQ

ESTATES

A south-facing property which benefits from endless hours of sunlight.

High ceilings and comfortable space distribution are the main features of the interior of this villa. A living room with a gas fireplace has a direct exit to the terrace. Next to the living room is a fully equipped spacious kitchen and a separate dining room. On the same level are three ample bedrooms with bathrooms, while the fourth bedroom with a bathroom is on the upper floor. The upper room is also suitable for a home office. That room is accessed by a spiral staircase, an ideal space for a small elevator connecting the garage level with the rest of the house.

The property is a perfect fit for anyone who appreciates privacy near the town and a distinctive southern lifestyle with various renovation options.



+34 951 123 083 | +44 (0)330 179 8687 | info@idiligestates.com Local 28, Edificio D, Centro de Negocios Puerta de Banús, N-340, Km 175, 29660 Nueva Andalucía

IDILIQ

ESTATES

