



R5387278

📍 La Campana

REF# R5387278 2.300.000 €

BEDS

4

BATHS

4.5

BUILT

473 m²

PLOT

579 m²

Located in the highly desirable residential area of La Campana, Nueva Andalucía, this charming south-east facing villa offers an exceptional opportunity to enjoy the best of Marbella living. Combining privacy, generous interior spaces, and a prime location close to Puerto Banús and the beach, the property is perfectly suited as a permanent residence, holiday home, or investment property on the Costa del Sol.

Set across three levels, the villa has been thoughtfully designed for comfortable family living and effortless indoor-outdoor entertaining. From the street entrance, steps lead down to the beautifully landscaped garden and terrace areas, creating a welcoming sense of privacy and tranquility.

The main floor features a bright open-plan living and dining area with abundant natural light, a modern fully equipped kitchen, and direct access to the spacious south-east facing terrace — ideal for al fresco dining and enjoying the Mediterranean climate year-round.

The upper floor comprises three spacious ensuite bedrooms, including two bedrooms with access to a large sunny terrace overlooking the surrounding residential area of Nueva Andalucía.

+34 951 123 083 | +44 (0)330 179 8687 | info@idiliqestates.com Local 28, Edificio D, Centro de Negocios Puerta de Banús, N-340, Km 175, 29660 Nueva Andalucía

IDILIQ

ESTATES

On the lower level, the property offers one additional bedroom with bathroom, a second lounge or entertainment area that can easily be converted into a 5th bedroom, and direct access to the outdoor kitchen, terraces, private swimming pool, and garden, making it ideal for guests or extended family living.

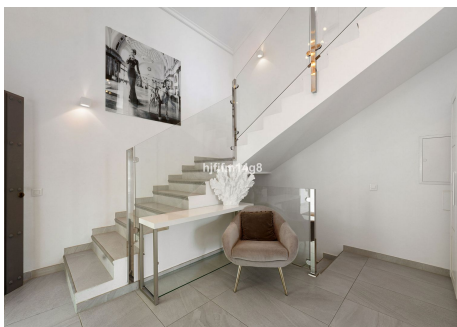
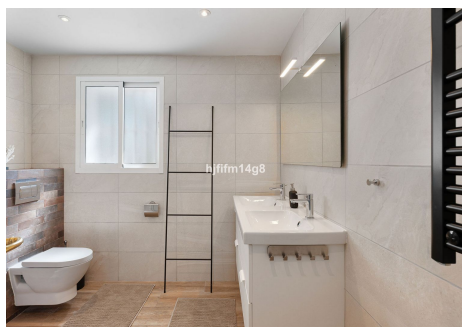
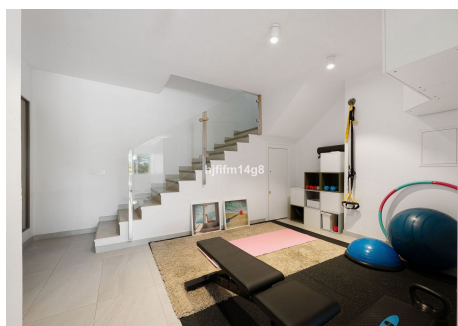
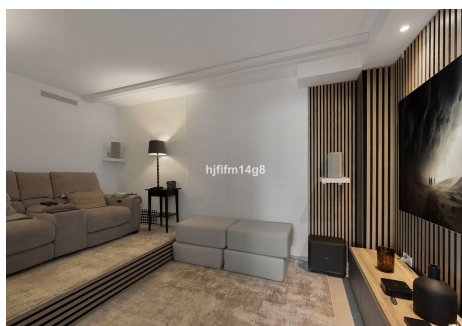
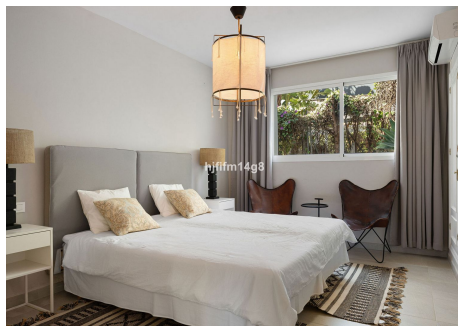
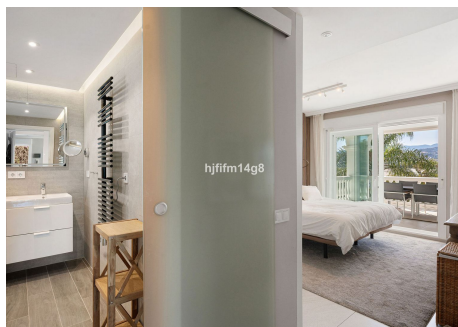
Situated in one of Nueva Andalucía's most convenient and fast-growing residential areas, the villa is within walking distance of restaurants, cafés, international amenities, and Scandinavian services including a Swedish grocery store. Golf courses, sports facilities, international schools, Puerto Banús, and the beaches of Marbella are all just minutes away.

This villa combines the peaceful atmosphere of La Campana with excellent connectivity to Nueva Andalucía, San Pedro, and Marbella, offering a rare balance of tranquility, convenience, and lifestyle appeal in one of the Costa del Sol's most sought-after locations.



IDILIQ

ESTATES



IDILIQ

ESTATES

