

# IDILIQ

ESTATES



R3301060

📍 Monda

REF# R3301060 449.000 €

BEDS

5

BATHS

3

BUILT

277 m<sup>2</sup>

PLOT

6188 m<sup>2</sup>

TERRACE

70 m<sup>2</sup>

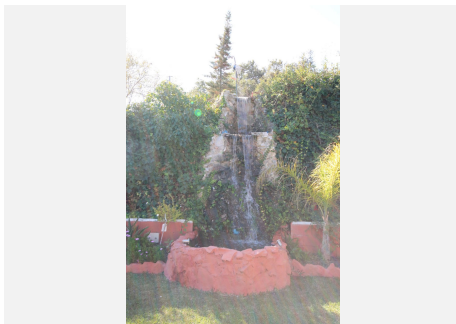
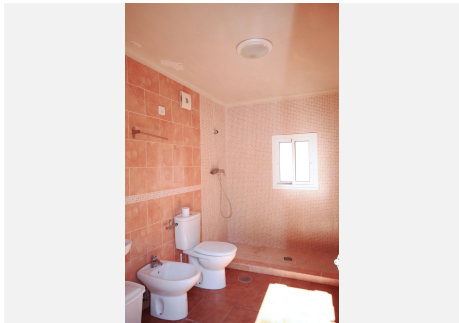
Opportunity at Bargain price! Lovely country house set between the picturesque Andalusian villages of Monda and Guaro, just a few kilometres away from Marbella, with stunning views over the countryside and the beautiful mountains of the Sierra de Las Nieves. A gated entrance drive leads up to the main house, the guest apartment and to a large patio with tropical roof, summer kitchen with bar and barbecue. The property comprises on the ground floor an entrance hall, a master suite, a spacious kitchen opening onto a spacious living/dining room with fireplace with direct access to the large terrace and the pool area. Downstairs, there are 4 more spacious bedrooms, a bathroom and with a spacious lounge with fireplace. The property is accessible via 1,5km dirt track. Fully fenced plot with own well water, many plants, fruit trees and farm animals. A great place, excellent value and huge potential. Airport: 30 min drive – Guaro village: 5 min drive - Monda village: 5 min drive - Marbella Town: 20 min drive - Puerto Banus: 20 min drive - Golf : 25 min drive - Beach: 20 min drive - Restaurants/Bars: 6 min drive - Amenities: 6min drive – Public Transports: 5 min drive Our team works incessantly to make sure that the description and the sales prices for the properties offered on this website are correct and up to date. Notwithstanding, the information contained in this website is subject to errors and omissions, and the properties themselves subject to price changes, prior sale or withdrawal from market. The property market on the Costa del Sol has completely recovered and good

+34 951 123 083 | +44 (0)330 179 8687 | info@idiliqestates.com Local 28, Edificio D, Centro de Negocios Puerta de Banús, N-340, Km 175, 29660 Nueva Andlucia

# IDILIQ

ESTATES

properties are being snapped up fast! We suggest that if you see something you like that fits your budget, contact us as soon as possible to avoid disappointment!



+34 951 123 083 | +44 (0)330 179 8687 | [info@idiliquestates.com](mailto:info@idiliquestates.com) Local 28, Edificio D, Centro de Negocios Puerta de Banús, N-640, Km 175, 29660 Nueva Andalucía.

# IDILIQ

ESTATES

