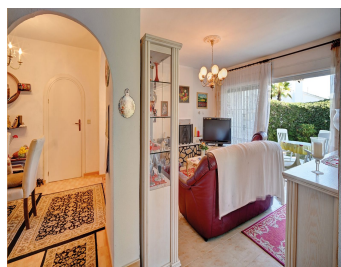
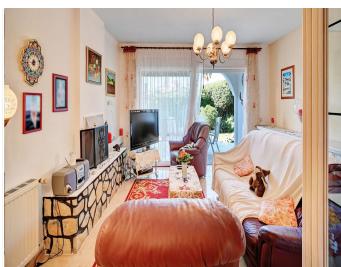


# IDILIQ

ESTATES



R4706095

📍 Marbesa

REF# R4706095 1.250.000 €

BEDS

3

BATHS

3

BUILT

120 m<sup>2</sup>

PLOT

787 m<sup>2</sup>

TERRACE

25 m<sup>2</sup>

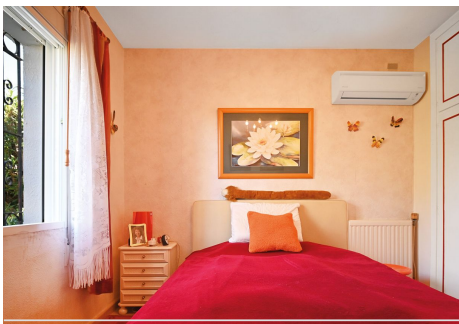
Detached villa only 150m away from the beautiful Marbesa beach. Welcome to this charming bungalow, built in 1967 and situated on an impressive plot of approx. 787m<sup>2</sup> only 150m from the beach. With a living area of over 120m<sup>2</sup> and a terrace of 25m<sup>2</sup>, this south-west facing property benefits from air conditioning in all rooms and offers plenty of space for your personal touches. The villa has 3 bedrooms, 3 bathrooms (2 ensuite), a fully fitted kitchen, a dining area and an inviting living room with fireplace. This layout creates an ideal environment for families looking for space to spread out. The spacious terrace invites you to enjoy the Andalusian sun and nature, while the lush garden offers plenty of space for gardening enthusiasts and green projects. A particular highlight is the sun terrace, accessible from the garden, which offers stunning sea views and spectacular sunsets. Practical features include a garage and a spacious laundry room that doubles as a utility room and workshop. The roof and kitchen were renovated 8 years ago. The house is conveniently located only 35 minutes from the airport and 15 minutes from the center of Marbella. The marina in Cabopino with its restaurants and shopping facilities is only 500m away and can be reached in a few minutes on foot. This house is perfect for those looking for a cozy home with space to develop and also offers a solid foundation to realize your creative ideas and create your dream home. Arrange a viewing today and be inspired by the possibilities of this unique property.

+34 951 123 083 | +44 (0)330 179 8687 | info@idiliqestates.com Local 28, Edificio D, Centro de Negocios Puerta de Banús, N-340, Km 175, 29660 Nueva Andlucia

# IDILIQ

ESTATES

\*\*\*\*\* Detached Villa, Marbesa, Costa del Sol. 3 Bedrooms, 3 Bathrooms, Built 120 m<sup>2</sup>, Terrace 25 m<sup>2</sup>, Garden/Plot 787 m<sup>2</sup>. Setting : Beachside, Close To Sea. Orientation : South West. Condition : Fair. Pool : Room For Pool. Climate Control : Air Conditioning, Hot A/C, Cold A/C. Views : Sea, Mountain. Features : Fitted Wardrobes, Private Terrace, Solarium, Satellite TV, Utility Room, Ensuite Bathroom. Furniture : Part Furnished. Kitchen : Fully Fitted. Garden : Private. Security : Electric Blinds. Parking : Garage, Private. Utilities : Electricity, Drinkable Water, Telephone. Category : Beachfront, Holiday Homes.



# IDILIQ

ESTATES

