



R5296630

📍 San Pedro de Alcántara

REF# R5296630 945.000 €

BEDS

5

BATHS

3

BUILT

359 m²

PLOT

359 m²

TERRACE

150 m²

Luxury Townhouse in Urb Tiro Pichón with Private Pool a Few Steps from the Center and the Beach

Elegance, privacy and privileged location in the heart of the Costa del Sol

Exclusive high-level townhouse located in a quiet and consolidated urbanization, a few steps from the historic center of San Pedro de Alcántara, where design, comfort and the Mediterranean lifestyle are in perfect harmony.

Main features

- Plot: 359 m²
- Built: 359 m²
- Interior housing: approx. 350 m²
- Distribution: 4 floors
- Bedrooms: 4 + additional! attic space

+34 951 123 083 | +44 (0)330 179 8687 | info@idiliqestates.com Local 28, Edificio D, Centro de Negocios Puerta de Banús, N-340, Km 175, 29660 Nueva Andlucia

- Bathrooms: 3 full bathrooms + 1 toilet
- Private pool
- South orientation

Distribution and spaces

- Entrance terrace with fruit trees
 - Covered pergola for parking within the plot
 - Large bright living-dining room
 - Separate office with direct views of the pool
 - Designer kitchen-dining room with breakfast bar
-
- First floor with 3 bedrooms, with two bathrooms, one of them en suite
 - Private loft-type penthouse: bedroom, built-in wardrobes, lounge area, office and fitness space
 - Basement with bedroom and bathroom en suite, TV room and social area with bar and cellar for more than 40 wines, and laundry area.

Outdoor & Lifestyle

- Large south terrace with chill out area and barbecue
- Private pool ideal to enjoy all year round
- Two large exterior storage rooms
- Quiet urbanization with large parking areas for guests

Unbeatable location

- Historic center of San Pedro: on foot
- Supermarkets (LIDL and DIA): a few steps away
- Beach: 15 minutes walking
- Highway access: less than 2 minutes
- Puerto Banús: 6 min
- Marbella: 10 min
- Estepona: 15 min
- Malaga Airport: 45 min

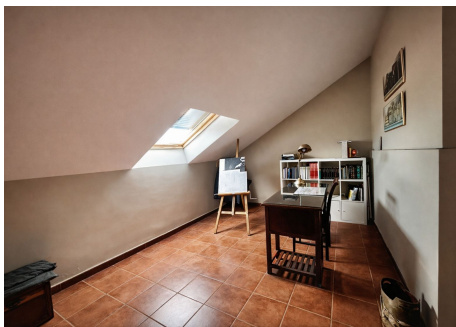
An exceptional property

It should be noted that the house has solar panels for hot water, in addition to the use of good qualities in all rooms.

Designed for those seeking exclusivity, spaciousness and a strategic location, ideal as a main residence or high-level investment on the Costa del Sol.

IDILIQ

ESTATES



IDILIQ

ESTATES

