



TOWNHOUSE 4 BEDROOMS 2.5 BATHROOMS IN MANILVA

 Manilva

REF# R4968166 489.000 €

BEDS	BATHS	BUILT	PLOT	TERRACE
4	2.5	142 m ²	228 m ²	25 m ²

Located in the privileged area of Manilva Beach, this townhouse offers a unique opportunity to enjoy life by the sea. With direct access to the beach and surrounded by amenities such as restaurants, golf courses, and the nearby port, this property combines comfort and location in a tranquil and well-connected environment.

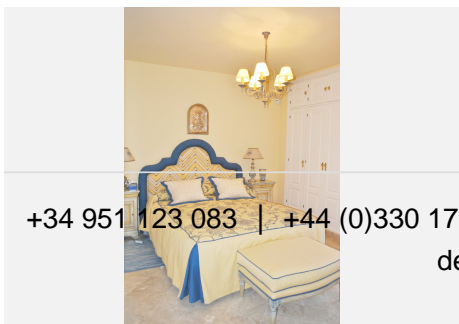
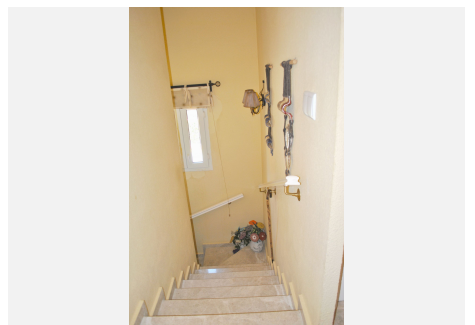
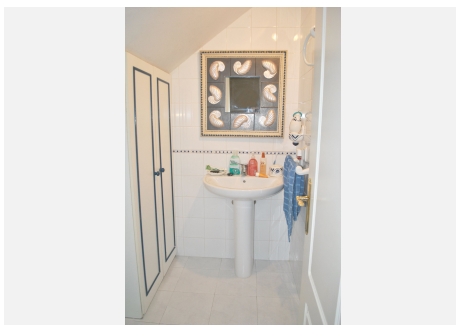
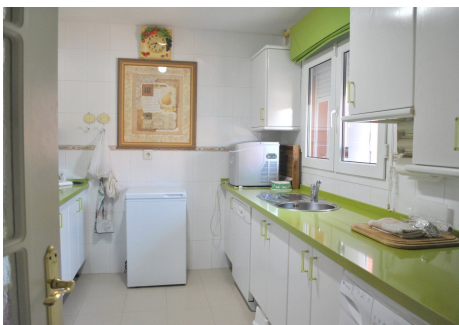
With a built area of 142.62 m² and a garden of 228.78 m², this home is ideal for both permanent residence and holiday getaways. The main floor of the house features a spacious and cozy living room, equipped with a fireplace that adds warmth and a traditional touch to the space. The dining area is partially separated from the living room. Marble floors add an elegant and easy-to-maintain finish. From the living room, there is access to an enclosed terrace with Lumon glass, perfect for enjoying both summer and winter, which opens onto the garden. The kitchen is separate and fully equipped.

IDILIQ

ESTATES

On the upper floors, the property offers four bedrooms with beautiful sea views, all with built-in wardrobes that optimize storage space, and two of them with private terraces. The house also has two full bathrooms on the upper floor and a spacious guest toilet on the main floor. The house is equipped with air conditioning to maintain a pleasant temperature throughout the year and a reinforced door for added security. The property includes an assigned uncovered parking space in the communal area, as well as additional space within the private garden of the property.

The house is part of a gated community that ensures privacy, with mature gardens and three communal swimming pools, one of which is located right on the beachfront. The community also features tennis and paddle courts. The proximity to the beach and the sea views make this property an exceptional choice for those seeking a relaxed lifestyle by the sea.



+34 951 123 083 | +44 (0)330 179 8687 | info@idiliqestates.com Local 28, Edificio D, Centro de Negocios Puerta de Banús, N-340, Km 175, 29660 Nueva Andalucía

IDILIQ

ESTATES

