



R4744492

📍 Istán

REF# R4744492 440.500 €

BEDS

2

BATHS

2

BUILT

130 m<sup>2</sup>

PLOT

90 m<sup>2</sup>

TERRACE

30 m<sup>2</sup>

This ground floor apartment Sierra Blanca Country Club offers a perfect escape from the hustle and bustle of the city while still providing quick access to all amenities. With its fully furnished and equipped interiors, this property is ready for you to move in and start enjoying a comfortable lifestyle. One of the main highlights of this apartment is its large garden, which includes a 33m<sup>2</sup> terrace and a 90m<sup>2</sup> private garden. With panoramic windows in every room and direct access to the terrace and garden, you can enjoy the beautiful views of the sea, the coast of Morocco and Gibraltar, the mountains, and the bay of Marbella. The apartment features a spacious living room with an open kitchen with island, dining area, 2 bathrooms, and 2 bedrooms with built-in wardrobes. There is a storage room for extra space and underground parking included in the price. The apartment is brand new and located in a gated community with a doorman for added security. In addition to the stunning views, this apartment also offers a range of desirable features. These include aerothermal water heating, air conditioning, double glazing, electric blinds, and porcelain floors. Other amenities include a communal pool, mature gardens, and a lift for easy access. For those with electric cars, the apartment comes with a large garage space that includes an EV charging station. The location of this property is ideal, as it is close to international schools, tennis and paddle tennis clubs, golf courses, shopping centers, and the vibrant Puerto Banus. The beautiful beaches and famous restaurants of

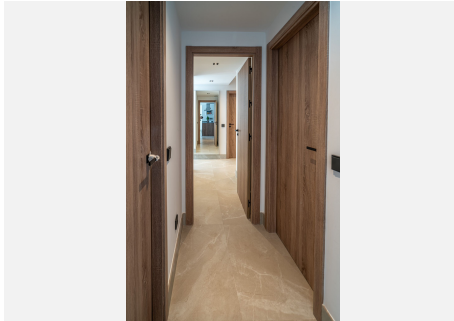
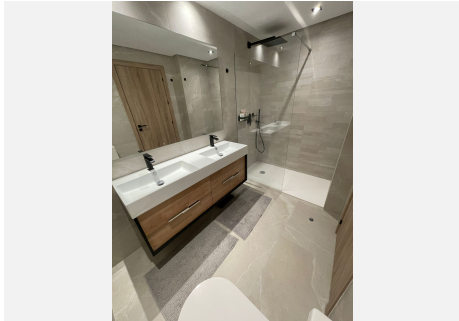
+34 951 123 083 | +44 (0)330 179 8687 | info@idiliqestates.com Local 28, Edificio D, Centro de Negocios Puerta de Banús, N-340, Km 175, 29660 Nueva Andlucia



# IDILIQ

ESTATES

the Golden Mile are also within easy reach. Sierra Blanca Country Club is a secluded enclave set atop the foothills of La Concha Mountain, only 7km away from the vibrant pulse of Marbella and this refined gated haven offers an authentic rural ambiance, coupled with breathtaking panoramic vistas.



# IDILIQ

ESTATES

