

R4853512

📍 Estepona

REF# R4853512 759.950 €

BEDS

3

BATHS

2

BUILT

114 m²

TERRACE

110 m²

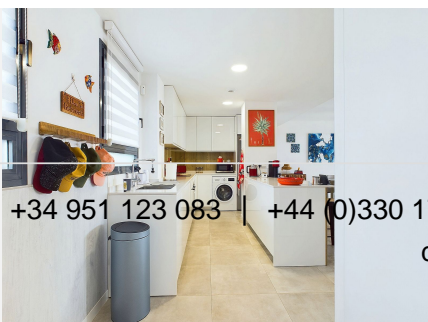
We are delighted to offer you this stunning exclusive listing for sale in the new Mesas area of Estepona with an development finished just a few months ago offering the latest qualities for energy efficiency and sustainability. Perfectly located so that it is walking distance to the old town of Estepona, the beautiful beaches including Crist beach and the marina of Estepona too. A couple of minutes stroll and you can use all the benefits of a great sporting facility the Centro Deportivo Las Mesas, with tennis, padel and many other sporting activities. If you like walking, trekking or cycling, then again, there are so many tracks and pathways you can use from flat and easy to higher ones amongst the Sierra Bermeja mountains. 3 bedrooms and 2 bathrooms one of them being ensuite and all with fitted wardrobes. With high ceilings and large glass sliding doors out to the immense terraces, the apartment enjoys a superb light and airy feel and space looking out to gorgeous sea views overlooking the soon to be finished green park, the sports centre and the old town of Estepona. The space distribution allows for a large living room with an open plan kitchen fitted with all the modern appliances by Bosch. The apartment has air conditioning, hot and cold powered by an arothermal heat pump for maximum efficiency. Only recently furnished by an interior designer, this property has been kept in immaculate condition and only used a few times. It is like a show flat! The complex has a pedestrian entrance as well as an entrance where you can stop to drop off any shopping or

+34 951 123 083 | +44 (0)330 179 8687 | info@idiliqestates.com Local 28, Edificio D, Centro de Negocios Puerta de Banús, N-340, Km 175, 29660 Nueva Andlucia

IDILIQ

ESTATES

deliveries and also the garage entrance where you will find the underground parking space and large storage room included in the price. There is a long pool, perfect for doing lengths and beside that there is a gym with sauna , jacuzzi and spa shower and a co - working area to be enjoyed by residents. On the pool level there is a gastro bar area where one can entertain guests. Once inside the apartment you enter through the security door into a hallway with storage cupboards on one side for coats and shoes and all the cleaning products. This leads you to the open plan kitchen which looks into the beautifully decorated living room and dining room set in a wide lay out as opposed to a galley shape, so as to allow as much light in as possible Two sets of floor to ceiling height double doors lead out on to the outstanding terraces of over 110 sq meters and the stunning views. Past the living and dining rooms you will find the three bedrooms and two bathrooms, one of them being ensuite t the master bedroom and the other one to be shared between the two guest bedrooms. All three bedrooms have access to the terrace independently.



+34 951 123 083 | +44 (0)330 179 8687 | info@idiliqestates.com Local 28, Edificio D, Centro de Negocios Puerta de Banús, N-340, Km 175, 29660 Nueva Andalucía

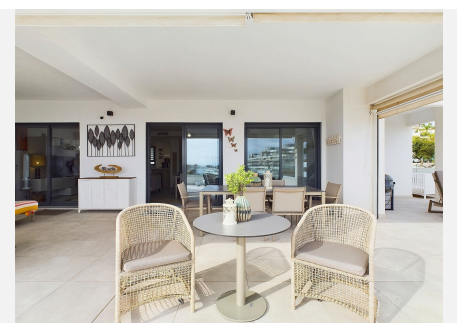
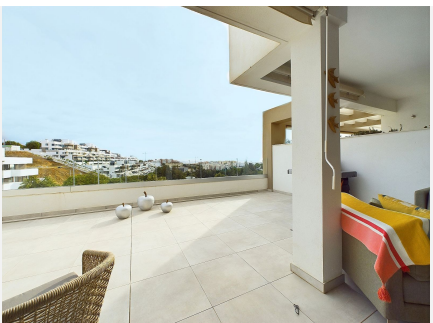
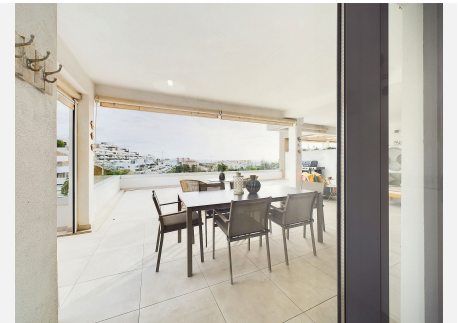
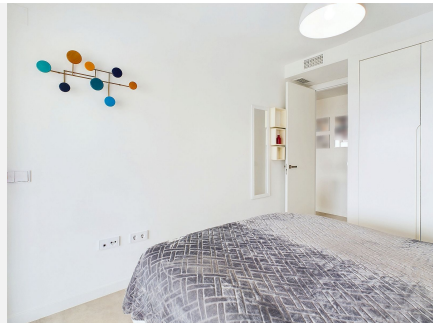
IDILIQ

ESTATES



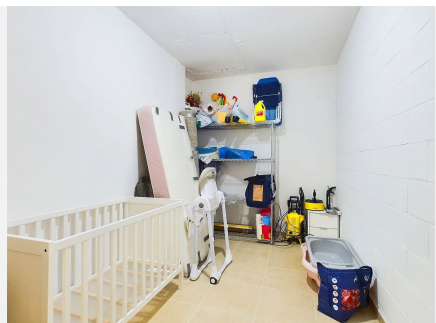
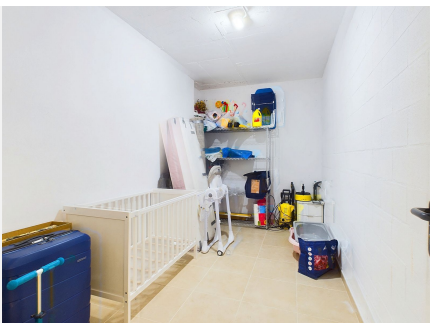
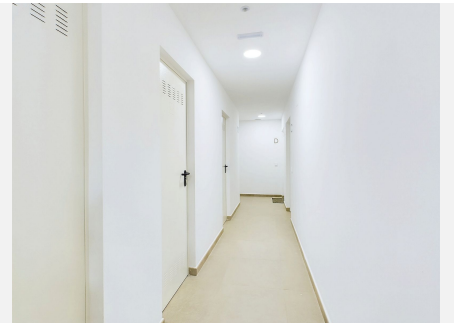
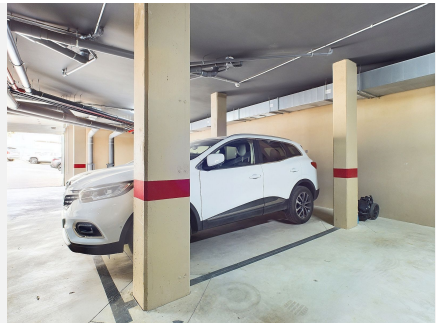
IDILIQ

ESTATES



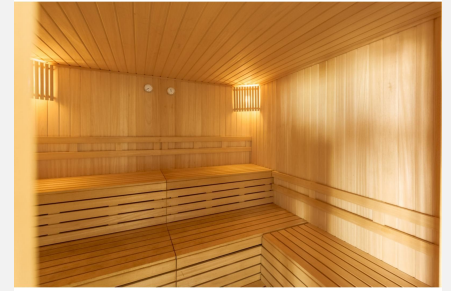
IDILIQ

ESTATES



IDILIQ

ESTATES



ESPECIFICACIONES

- Superficie construida: 100 m²
- Superficie útil: 80 m²
- Altura: 2,70 m
- Planta: 1ª

MEJORAS INCLUIDAS

- 30 años de garantía

Localización