

# IDILIQ

ESTATES



R4654060

📍 Manilva

REF# R4654060 319.900 €

BEDS

3

BATHS

2

BUILT

114 m<sup>2</sup>

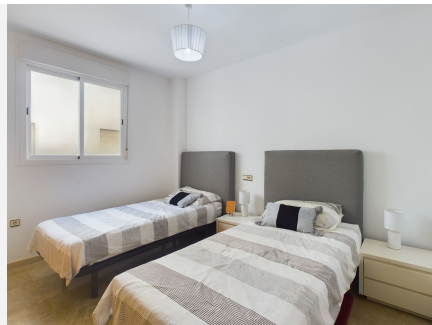
TERRACE

38 m<sup>2</sup>

**YOUR BEACHSIDE RETREAT AWAITS!!!!** An exquisite duplex penthouse, featuring 3 bedrooms and 2 bathrooms, is conveniently located just 200 meters from the beach. This stunning residence offers underground parking, air conditioning, full furnishing, captivating sea views, two pools plus a childrens pool, gymnasium under construction, a prime location, only a 5-minute drive from Puerto De La Duquesa and 15 minutes from Estepona. The Aldea Bistro Bar and local supermarket are only a 1 minute walk away, along with delightful beach bars nearby. Additionally, it is in close proximity to Valderrama, Real Club Sotogrande, and San Roque golf clubs . Gibraltar is a short 30-minute drive away, and Malaga airport can be reached within an hour. This property presents an excellent investment opportunity and serves as an ideal holiday retreat, appealing to golf enthusiasts and families alike.

# IDILIQ

ESTATES





# IDILIQ

ESTATES

