



R4929157

📍 Nueva Andalucía

REF# R4929157 1.595.000 €

BEDS

3

BATHS

2.5

BUILT

210 m²

TERRACE

50 m²

This stunning corner townhouse is located in the exclusive Azahara II development in Nueva Andalucía, Marbella, Málaga. With a privileged location, this property offers proximity to amenities, transport, golf courses, shops, the city centre and schools. In addition, it enjoys spectacular views of the sea, the mountains and the gardens. The recently renovated property has a functional and bright layout. On the ground floor there are three bedrooms, all with direct access to a terrace that connects to the community gardens. One of the bedrooms has an en-suite bathroom, while the others share an additional bathroom. On the entrance floor, there is a spacious living room with an open kitchen and a separate laundry room. From this floor, there is access to a large south-facing terrace, ideal for enjoying the Mediterranean climate and the stunning sea and mountain views. There is also a toilet available for added convenience. The property, with a constructed area of 210m² and 50m² of terrace, has been designed to maximise natural light and connection with the outdoor spaces. The development offers amenities such as a communal swimming pool and gardens, as well as a communal carport for parking. This semi-detached house is in excellent condition, ready to move into, and is perfect both as a main residence or to enjoy a second home in one of the most sought-after areas of the Costa del Sol.

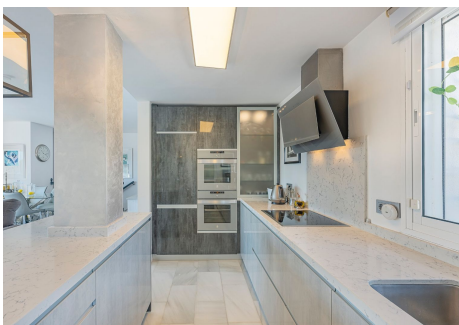
IDILIQ

ESTATES



IDILIQ

ESTATES



IDILIQ

ESTATES

