



## HOUSE 8 BEDROOMS 7 BATHROOMS IN NUEVA ANDALUCÍA

 Nueva Andalucía

REF# R3982765 3.495.000 €

BEDS

8

BATHS

7

BUILT

494 m²

PLOT

1376 m²

Offering an exclusive lagoon pool, this paradisiac 8 bedroom villa is set in Aloha (Nueva Andalucia, Marbella) just minutes away from Puerto Banus.

The property has been completely renovated and is distributed over 3 levels. It comprises a fully equipped kitchen, 2 living/entertainment areas, dining area, 8 bedrooms and 7 bathrooms. It is suitable for up to 16 guests, who will have access to the entire property, its surroundings and free parking.

Outdoors there are beautiful tropical gardens inspired in a jungle design, the unique lagoon swimming pool that looks like a pebble stone beach and includes a built-in jacuzzi for 15 people & a cascade cave with a bench beneath that allows having cocktails while being in the pool.

Additional features include air conditioning, lift, fireplace and BBQ.

# IDILIQ

## ESTATES

The villa is ideal for a comfortable quality vacation break in Marbella with family or friends and it is also suitable to celebrate private events such as weddings (but not parties).

The sandy beaches of Puerto Banus are 3 kilometres from the property, as well as its distinguished boutique shops, gourmet restaurants, cafes, fabulous promenade with spectacular yachts and all its amenities.

There is walking distance to all the services of Aloha, like restaurants, supermarkets, shops, banks and much more.

Perfect as well for golf lovers, as Club de Golf Aloha is steps from the property and other prestigious golf courses are pretty close to the house: Real Club de Golf Las Brisas, Los Naranjos Golf Club or Magna Marbella Golf, all these belonging to the renowned Nueva Andalucia's Golf Valley.

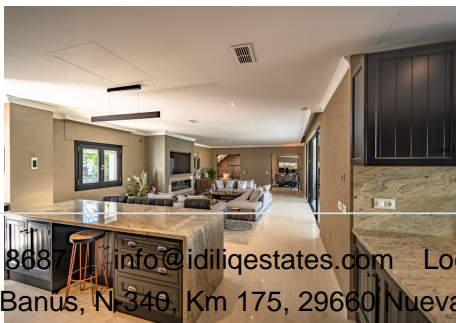
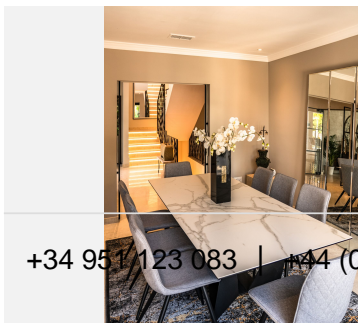
The centre of Marbella is 10 minutes driving and the international airport of Malaga is less than 40 minutes away.

There is a concierge service provided to cover all your requirements and a private chef (plus an extra fee).

\* Check-in anytime between 15.00 – 21.00 h. Late check-ins will have a surplus cost.

\* Check-out until 12.00h.

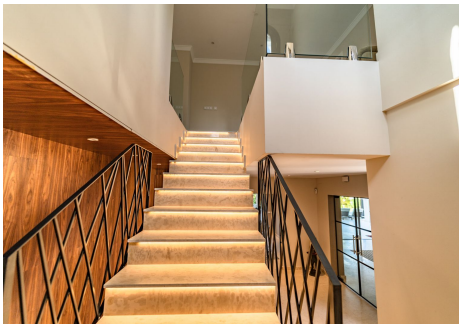
\* Minimum 7 nights bookings.





# IDILIQ

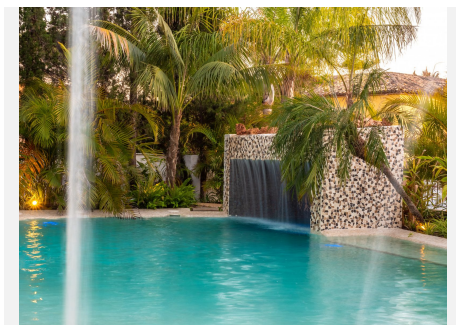
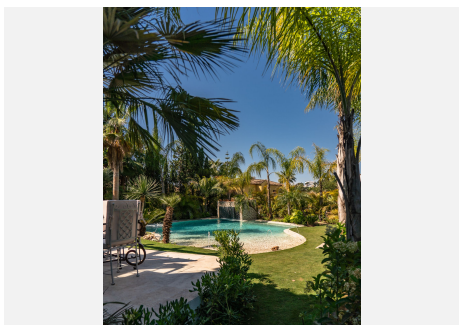
ESTATES





# IDILIQ

ESTATES





# IDILIQ

ESTATES

