



R5427814

 Benalmadena

REF# R5427814 825.000 €

BEDS

3

BATHS

2

BUILT

110 m²

PLOT

400 m²

KEYS IN OFFICE – EASY VIEWINGS

Set in the highly sought-after residential area of Torremar/La Capellanía in Benalmádena, this charming single-level semi-detached villa boasts spectacular panoramic views over the Mediterranean Sea and Fuengirola Bay. Originally built as a 3-bedroom home, the property is currently configured as a spacious 2-bedroom residence with one full bathroom and a guest toilet, offering generous living spaces with the option to easily restore the third bedroom if desired.

Designed entirely on one level, the villa provides comfortable, step-free living with no internal stairs—ideal for both permanent living and holiday enjoyment. The true highlight of the home is its beautiful private terrace/ and garden, where the breathtaking sea views provide the perfect backdrop for al fresco dining, entertaining guests, or simply relaxing while embracing the Costa del Sol lifestyle.

Additional features include a private garage, a separate laundry room, and a Jacuzzi perfectly positioned to enjoy the stunning views, creating an ideal space to unwind at any time of the day.

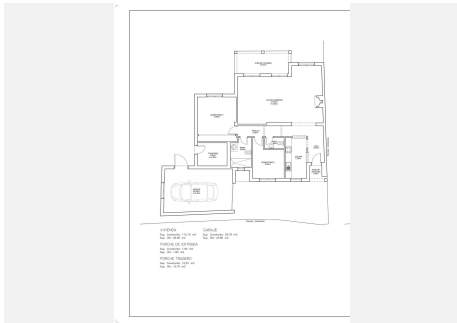
+34 951 123 083 | +44 (0)330 179 8687 | info@idiliqestates.com Local 28, Edificio D, Centro de Negocios Puerta de Banús, N-340, Km 175, 29660 Nueva Andalucía

IDILIQ

ESTATES

The property is conveniently located within an easy, flat walk of supermarkets, restaurants, cafés, and the bus stop in Altos del Higuerón, offering the rare combination of outstanding views and excellent everyday convenience.

Whether you're searching for a permanent residence, a holiday retreat, or a smart investment, this exceptional home offers an unbeatable location, magnificent views, and outstanding potential in one of Benalmádena's most desirable neighbourhoods



IDILIQ

ESTATES

