



R5009326

📍 Alhaurín el Grande

REF# R5009326 199.000 €

BEDS

4

BATHS

2

BUILT

129 m²

Nestled on a quiet residential street right in the heart of Alhaurín el Grande, this spacious townhouse is a hidden gem offering comfort, flexibility, and a true taste of the Andalusian lifestyle. With cafés, tapas bars, shops, and all the town's vibrant amenities just a short stroll away, you'll enjoy the best of both worlds — peaceful living with everything at your fingertips.

This is a home designed for real life, spread out across three generous floors and full of potential to adapt to your needs.

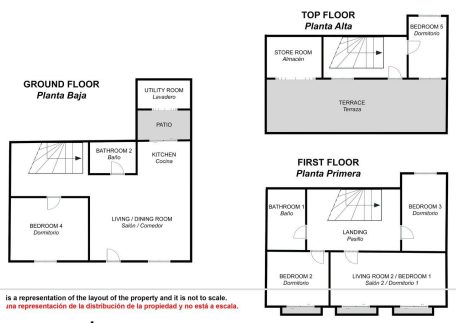
The ground floor welcomes you into a bright, open plan living / dining area that flows into a modern, well-equipped kitchen. Step out to a private patio, a practical space for a utility area and storage, and enjoy the ease of a ground-floor bedroom and a full shower room, perfect for guests or anyone who prefers to avoid stairs.

Upstairs, the first floor offers three bedrooms and a family bathroom. The current owners have transformed the largest bedroom into a second living room, showing just how flexible the layout can be. Whether you

+34 951 123 083 | +44 (0)330 179 8687 | info@idiliqestates.com Local 28, Edificio D, Centro de Negocios Puerta de Banús, N-340, Km 175, 29660 Nueva Andlucia

need a home office, a playroom, or an extra chill-out zone, there's plenty of space to create your ideal setup.

The top floor features a fifth bedroom and opens out onto an ample west-facing terrace — the real lifestyle highlight of this home. Here, you'll enjoy warm afternoon sun and panoramic views of the surrounding countryside. It's an ideal spot for al fresco dining, relaxed evenings with friends, or simply unwinding with a glass of wine while watching the sun set behind the hills. There's also a storeroom, and just above, a flat rooftop area equipped with a solar panel for hot water. With some creative vision, this could easily be developed into a full roof terrace — adding even more outdoor living space with stunning views.



is a representation of the layout of the property and it is not to scale.
 es una representación de la distribución de la propiedad y no está a escala.