



R4644442

📍 Monda

REF# R4644442 189.500 €

BEDS

4

BATHS

2

BUILT

126 m²

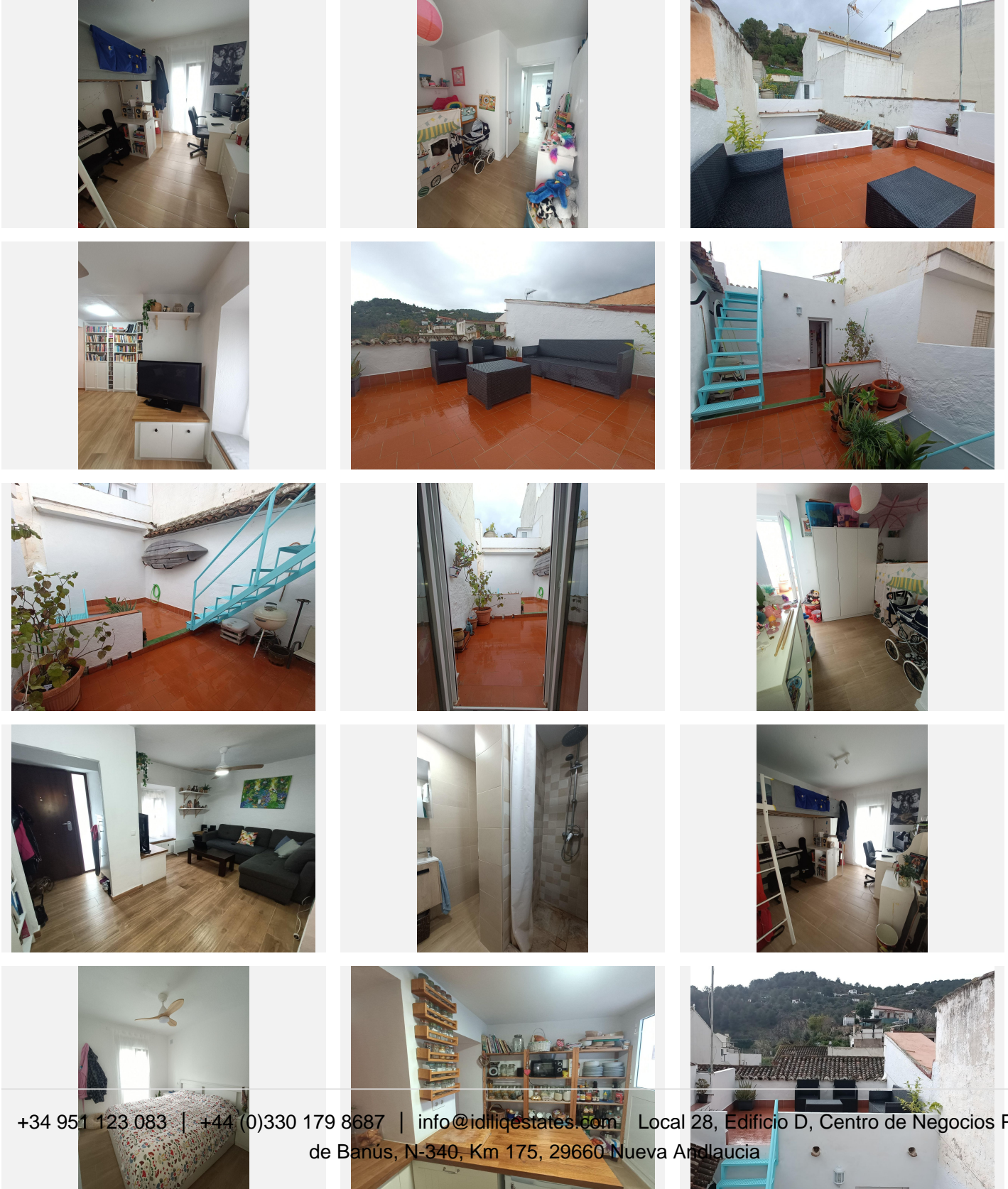
In the charming village of Monda sits a beautifully renovated townhouse, completely move-in ready and boasting brand-new windows and flooring. Upon entering, you're greeted by a spacious hall leading into an expansive open-plan living and kitchen area. The unique dual kitchen design offers convenience and easy access to the back of the house. Here, you'll find a newly remodeled bathroom with a relaxing bathtub and a backdoor leading to a street with parking options. A clever laundry area and storage space have been thoughtfully integrated beneath the stairs. Ascend to the first floor and discover a tranquil bedroom towards the rear of the house, featuring direct access to one of the home's delightful roof terraces, where you can bask in stunning views of the enchanting castle. Descending the stairs at the front of the house, you'll encounter another staircase leading to the second level, where you'll find three generously sized bedrooms. Two of these bedrooms have charming French balconies while one offers direct access to the property's other two roof terraces and a charming patio on the ground level. This floor also features a tastefully renovated bathroom with a refreshing shower. Every window in this meticulously maintained townhouse has been replaced with brand-new, double-glazed units, ensuring energy efficiency and comfort. The expansive roof terraces provide ample space for relaxation and entertainment, while offering panoramic vistas of the picturesque village. With its four bedrooms, two bathrooms, two kitchens, ample storage, and welcoming

+34 951 123 083 | +44 (0)330 179 8687 | info@idiliqestates.com Local 28, Edificio D, Centro de Negocios Puerta de Banús, N-340, Km 175, 29660 Nueva Andlucia

IDILIQ

ESTATES

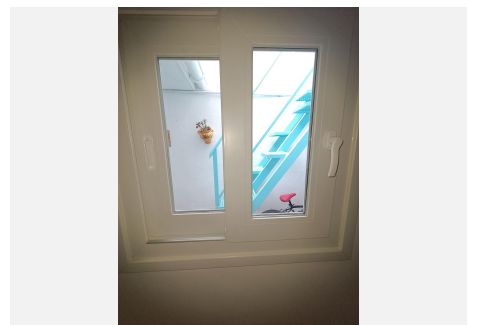
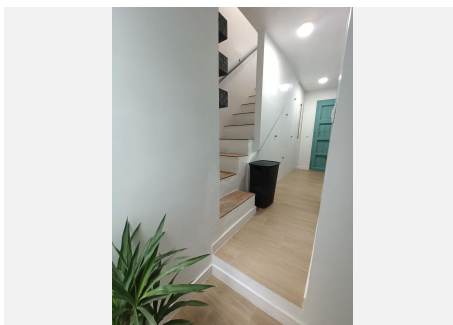
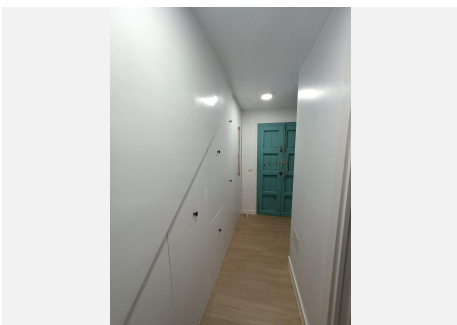
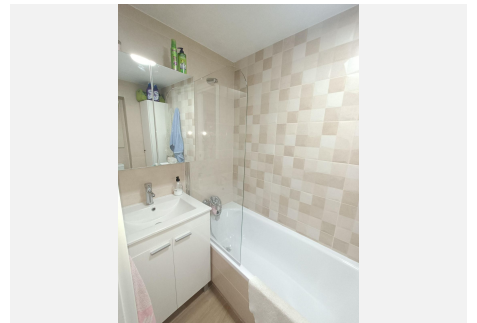
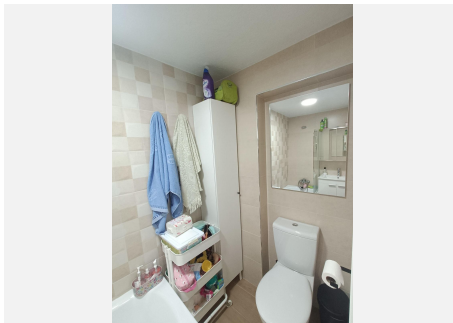
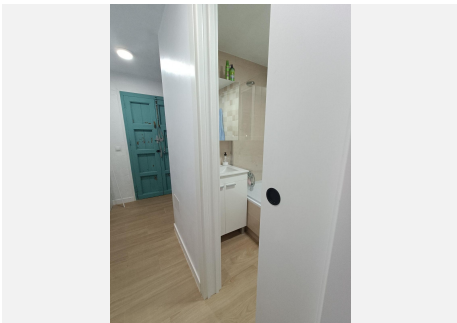
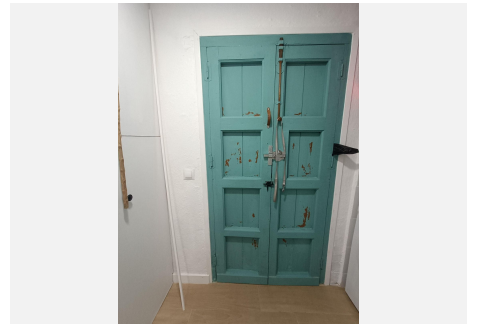
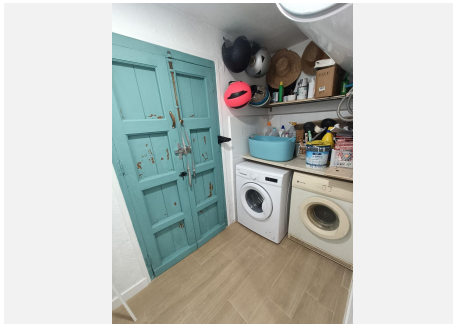
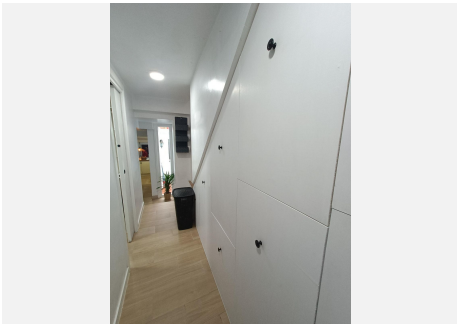
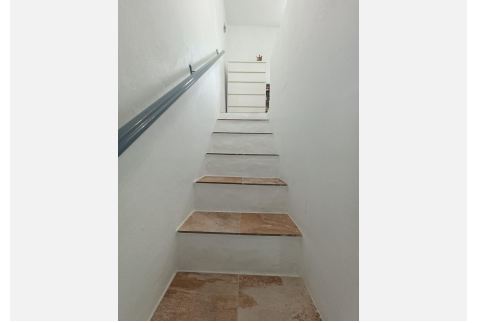
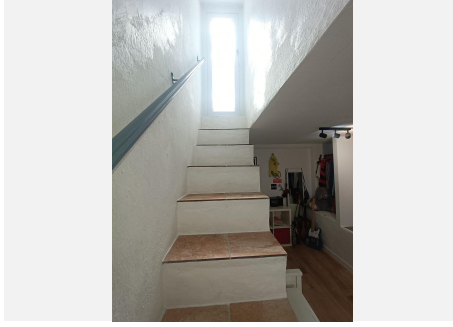
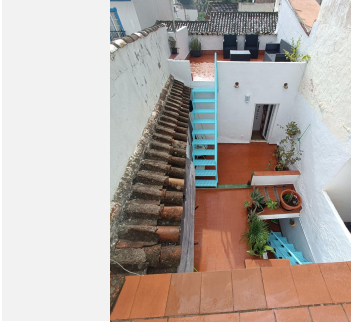
living space, this townhome is a true gem, ready to provide its new owners with a comfortable and stylish living experience.



+34 951 123 083 | +44 (0)330 179 8687 | info@idiliqestates.com Local 28, Edificio D, Centro de Negocios Puerta de Banús, N-340, Km 175, 29660 Nueva Andalucía

IDILIQ

ESTATES



IDILIQ

ESTATES

