



R5253607

 Nueva Andalucía

REF# R5253607 525.000 €

BEDS

2

BATHS

2

BUILT

80 m²

TERRACE

85 m²

This two-bedroom penthouse is located a few minutes from Puerto Banús, offering panoramic views of Marbella's iconic La Concha mountain and the Mediterranean coast. Fully furnished with quality furniture, the residence combines comfort with refined finishes, creating an ideal retreat in one of Marbella's most sought-after areas.

The property features a spacious living room with direct access to a large terrace designed for dining, lounging, and outdoor entertaining. The terrace captures both mountain and sea views, enhancing the sense of privacy and relaxation. The kitchen is fully equipped with modern appliances, including a dishwasher, washing machine, and dryer.

The primary suite includes an en-suite bathroom and terrace access, while the second bedroom, also opening onto the terrace, is positioned next to a guest bathroom with a shower. Both bedrooms are fitted with king-sized beds and high-quality furnishings.

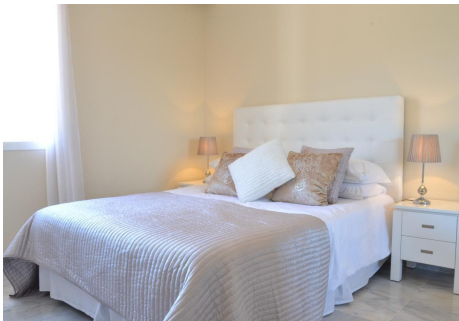
IDILIQ

ESTATES

Within the gated community, residents benefit from extensive facilities. Tropical gardens surround multiple swimming pools, including children's areas open during the summer months. Six paddle tennis courts, a secure children's play zone with swings and climbing frames, and an on-site bistro create a complete residential setting.

Property highlights:

- Two bedrooms, primary suite with en-suite bathroom
- Large terrace with panoramic mountain and sea views
- Fully furnished with quality interiors
- Gated community with tropical gardens and pools
- Six paddle tennis courts, secure children's play area, On-site bistro
- Holiday rentals permitted



IDILIQ

ESTATES

