



R4891567

 Nueva Andalucía

REF# R4891567 925.000 €

BEDS

4

BATHS

3

BUILT

250 m²

TERRACE

58 m²

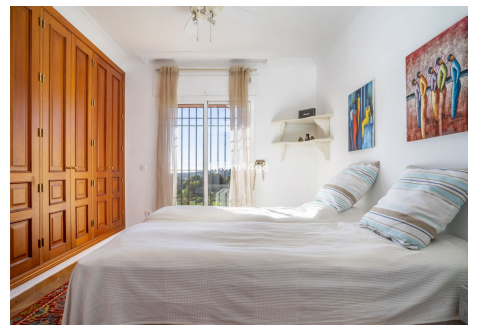
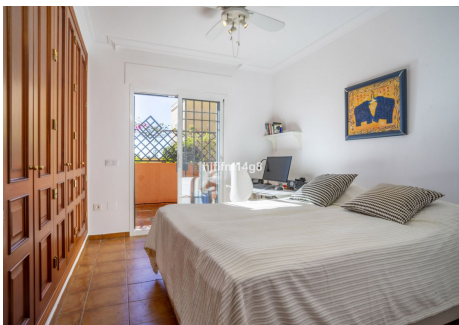
Brisas del Sur is a wonderful complex full of colourful townhouses set in the heart of Nueva Andalucía. It comprises 52 properties in total and the complex offers a lovely family friendly and Mediterranean atmosphere. It benefits of having an elevated positioning in the hills whilst still being close to all amenities. If you are a golf lover, you are in luck. Brisas del Sur is surrounded by the popular golf courses of the area including Aloha Golf Club, Los Naranjos and Las Brisas. This is the most idyllic location for avid golfers, couples or families to enjoy their life in a picturesque setting. Entrance level comprises guest toilet and guest bedroom with ensuite bathroom and direct access to a small little terrace. From this level you can go up or down. Take the stairs down and you will find a large room to be turned into anything you wish. Here you also have a spacious laundry room and a separate storage room. At this level you have access to the private garage. Another stair down you find a great space that can be used as a bedroom since it has its private large bathroom and small windows for direct light and airing. Moving up the stairs from the entrance you will find the main living area. This comprises spacious kitchen in open plan with the living room. From the living room you have access to a patio ideal for fruit tree garden or simply entertaining in the shade. Also, access to the main terrace facing south and with panoramic views of the valley and sea. From the living room, moving up half a set of stairs it takes you to another guest bedroom with in-suit bathroom.

+34 951 123 083 | +44 (0)330 179 8687 | info@idiliqestates.com Local 28, Edificio D, Centro de Negocios Puerta de Banús, N-340, Km 175, 29660 Nueva Andalucía

IDILIQ

ESTATES

Another half flight of stairs up you find the spacious master bedroom and bathroom. Sliding doors out to yet another terrace with unbeatable views. The location, center of Nueva Andalucia, is fantastic. Puerto Banús is just a 5-minute drive away. Puerto Banus is a renowned area with a selection of bars, restaurants, shops, boutiques and beaches made to impress. Likewise, the more traditional Spanish towns of San Pedro and Marbella are just a short drive away.



IDILIQ

ESTATES

