



R4992379

📍 Benalmadena

REF# R4992379 795.000 €

BEDS

3

BATHS

3

BUILT

251 m<sup>2</sup>

PLOT

717 m<sup>2</sup>

TERRACE

29 m<sup>2</sup>

Located in the prestigious community of La Capellania, this villa combines charm, comfort and stunning panoramic sea views. Just steps away from the beach, it is the ideal place to enjoy the Mediterranean lifestyle.

The property offers a spacious outdoor living area with unobstructed views of the Mediterranean. Its modern bar-style kitchen and spacious living room have direct access to an enclosed porch, where a large Jacuzzi is located, perfect for relaxation and enjoyment.

The villa has three bedrooms: two large bedrooms on the upper floor (one with en-suite bathroom) and a third bedroom on the ground floor, which has a bathroom and direct access to the garden and swimming pool. In addition, there is the possibility to build a fourth bedroom in the space where the indoor garage is currently located.

The seller offers the possibility of acquiring the villa as is or as a customised project, allowing the buyer to make additional changes according to their needs.

+34 951 123 083 | +44 (0)330 179 8687 | [info@idiliqestates.com](mailto:info@idiliqestates.com) Local 28, Edificio D, Centro de Negocios Puerta de Banús, N-340, Km 175, 29660 Nueva Andlucia

# IDILIQ

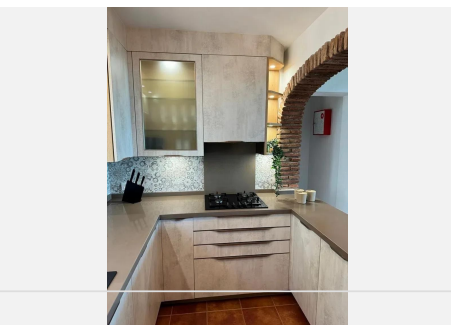
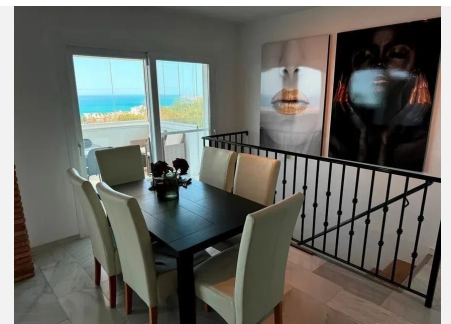
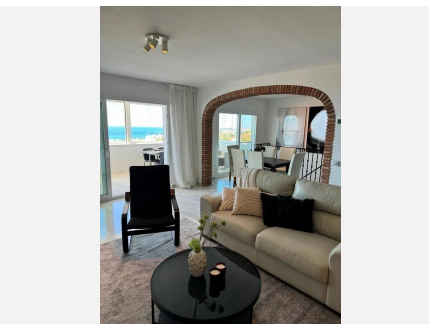
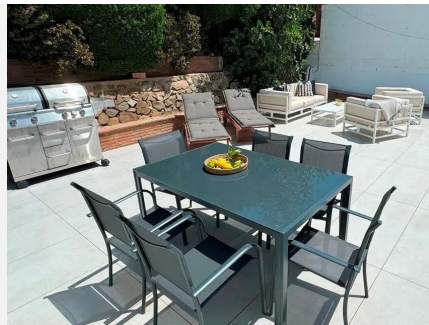
ESTATES

Don't miss this unique opportunity! Contact us for more information or to arrange a viewing.

We inform you that our agency fees are already included in the sale price, so you should not pay any management fees or real estate advice.

And that in compliance with the Decree of the Junta de Andalucía 218/2005 of October 11, we inform you that the notary fees, registration, ITP and other expenses inherent to the sale are not included in the price.

The information provided is indicative, is not binding and has no contractual value. The offer is subject to errors, price changes, availability and availability.



# IDILIQ

ESTATES

