



## MIDDLE FLOOR APARTMENT 2 BEDROOMS 2 BATHROOMS IN THE GOLDEN MILE

 The Golden Mile

REF# R5430718 1.590.000 €

BEDS	BATHS	BUILT	TERRACE
2	2	172 m <sup>2</sup>	52 m <sup>2</sup>

Balcones de Puente Romano 1-1 is a beautifully renovated two-bedroom, two-bathroom apartment that combines contemporary comfort with one of Marbella's most sought-after addresses. Bright, refined interiors are complemented by warm natural textures, a spacious open-plan living and dining area with a feature fireplace, and a generous covered terrace designed for year-round outdoor living. Overlooking mature greenery with glimpses towards the Mediterranean, the apartment offers a peaceful setting just moments from the beach and the heart of Puente Romano.

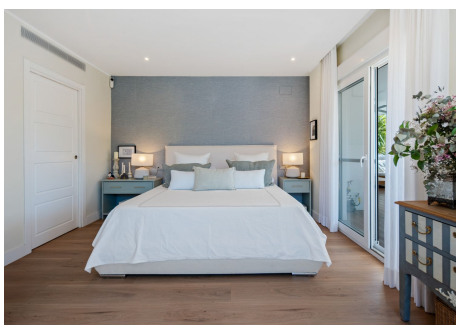
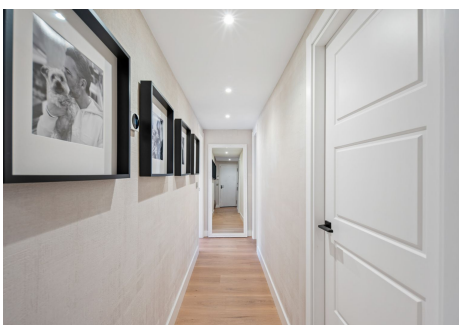
The layout has been carefully designed for effortless everyday living. A sleek, fully equipped kitchen sits separately while maintaining an easy connection to the main living space, creating a practical flow for both entertaining and family life. The principal suite is exceptionally spacious, complete with extensive fitted wardrobes, an elegant en-suite bathroom and direct access to the terrace, while an additional bedroom provides comfortable accommodation for guests or children. Every room benefits from abundant natural light, understated finishes and a calm, timeless aesthetic that feels immediately welcoming.

+34 951 123 083 | +44 (0)330 179 8687 | [info@idiliqestates.com](mailto:info@idiliqestates.com) Local 28, Edificio D, Centro de Negocios Puerta de Banús, N-340, Km 175, 29660 Nueva Andlucia

# IDILIQ

ESTATES

Set within the established Balcones de Puente Romano community, residents enjoy beautifully maintained gardens, a large communal swimming pool and an unbeatable location on Marbella's Golden Mile. The beach, the renowned restaurants of Puente Romano Resort, the promenade and a wealth of leisure facilities are all within easy walking distance, while Puerto Banús and Marbella town centre are just minutes away. Whether as a permanent residence or an elegant Mediterranean retreat, this is a home that places lifestyle, convenience and quality at the centre of everyday living.



# IDILIQ

ESTATES

