



R5419552

 Nueva Andalucía

REF# R5419552 1.695.000 €

BEDS

3

BATHS

3.5

BUILT

129 m²

TERRACE

64 m²

Set on top floor of the prestigious Aloha Hill Club, a gated residential community in the heart of Nueva Andalucía, this exceptional south-facing penthouse offers a rare blend of space, style, and elevated living.

Step inside and the open-plan living area immediately sets the tone: a fluid, light-filled space where every design decision has been made with intention.

The kitchen and dining area connect seamlessly with the living room, creating a relaxed space and a bright and welcoming atmosphere. A large cream sofa anchors the living area, facing a modern wall-mounted fireplace that adds warmth and character. Delicate touches of colour, together with the kitchen's dark cabinetry and stone worktops, enrich the space with a sense of refined balance. The kitchen is designed to the highest standards, featuring a central island and premium appliances by Miele and Siemens. A separate laundry room, ensures practicality and discretion in daily living.

Floor-to-ceiling sliding doors open onto a generous terrace with a lounge and BBQ area, with mountain and sea views completing the setting.

+34 951 123 083 | +44 (0)330 179 8687 | info@idiliqestates.com Local 28, Edificio D, Centro de Negocios Puerta de Banús, N-340, Km 175, 29660 Nueva Andalucía

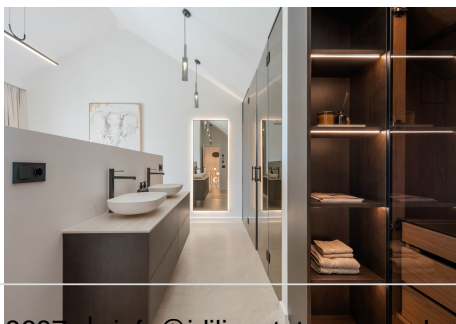
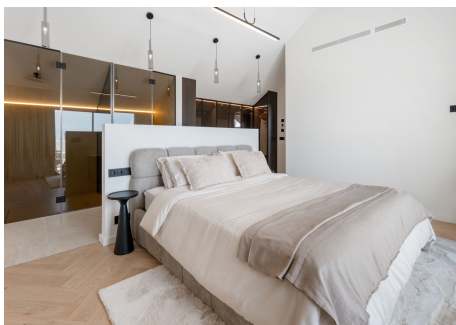
IDILIQ

ESTATES

The master suite, with the feel of a private residence, goes beyond the idea of a traditional bedroom. Its open layout allows the sleeping, dressing, and bathing areas to flow naturally together, creating a calm and spacious retreat. The two additional bedrooms follow the same commitment to quality, each with its own private en-suite bathroom, ensuring that every guest or family member enjoys the same sense of comfort and independence that defines the home as a whole.

Comfort and convenience are enhanced throughout the property with a full air-conditioning and heating system, as well as electric underfloor heating in the bathrooms, kitchen, and dining areas. Security is seamlessly integrated with a smart entrance lock offering fingerprint access, Face ID and traditional key entry.

Aloha Hill Club offers a curated set of amenities: outdoor pool, heated indoor pool, spa facilities, a fully equipped gym, a restaurant and a clubhouse, all within a secure gated environment with concierge services. A private parking space is included, with a direct elevator connection from the garage to the property. Surrounded by the lush greens of world-class golf courses and just minutes from the glamour of Puerto Banús, the Golden Mile, and the charming old town of Marbella, the location places the very best of the Costa del Sol right at your doorstep.



IDILIQ

ESTATES



IDILIQ

ESTATES

