



R4950796

📍 Benalmadena

REF# R4950796 939.000 €

BEDS

3

BATHS

2

BUILT

160 m²

TERRACE

50 m²

Discover luxury and comfort in this stunning duplex penthouse located in the prestigious Stupa Hills development in Benalmádena. With 261 m² built and 162 m² usable, this architectural gem offers panoramic sea views that will take your breath away. Distributed over two floors, it features an elegant living room and open kitchen where light and spaciousness come together. On the ground floor, you will find two cozy bedrooms and a full bathroom, while the master bedroom, with an en-suite bathroom, is located on the upper floor for greater privacy. Two spacious terraces of more than 50 m² are perfect for relaxing outdoors or entertaining guests, enjoying the stunning views. Built in 2020, this penthouse features high-quality finishes, including ceramic floors, double glazing and an efficient aerothermal system. In addition, you will enjoy central air conditioning to maintain the perfect climate all year round. The development offers a range of exclusive services such as an outdoor and indoor swimming pool, sauna and spa area, gym and direct access to the supermarket from the elevator. Located next to the emblematic Buddhist Stupa, this apartment exudes good energy to be enjoyed in every corner of the house. It also includes a storage room of 11 m² and two large parking spaces. Facing south and with an energy rating of B, this property is the perfect combination of style and sustainability. Don't miss the opportunity to live in a privileged environment with all the comforts you've always dreamed of. Come and see your new home in the Mediterranean

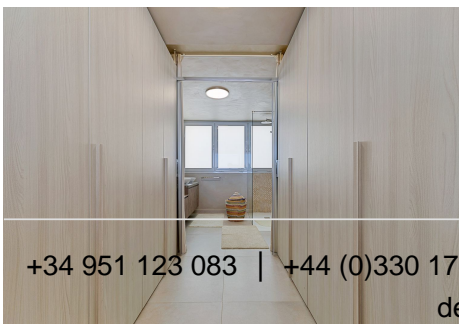
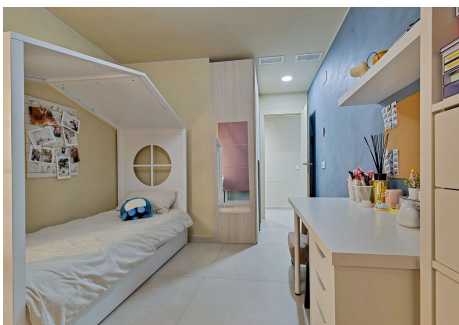
+34 951 123 083 | +44 (0)330 179 8687 | [info@idiliqestates.com](mailto:info@idiliqestates.com) Local 28, Edificio D, Centro de Negocios Puerta de Banús, N-340, Km 175, 29660 Nueva Andalucía



# IDILIQ

ESTATES

paradise!

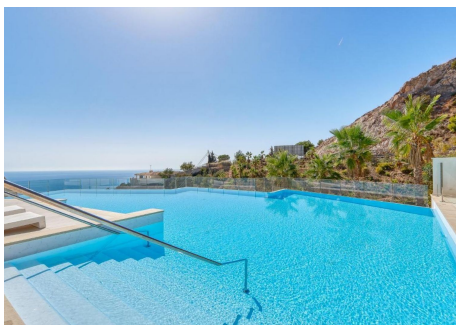
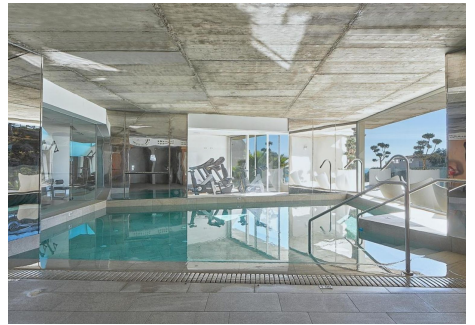
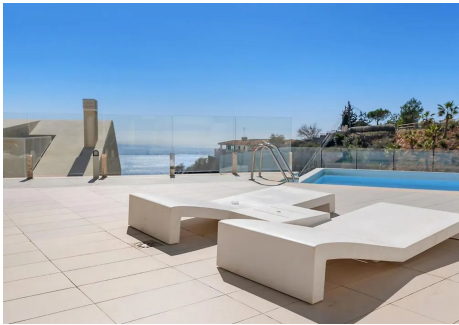
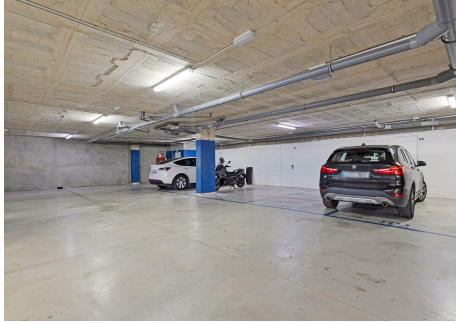


+34 951 123 083 | +44 (0)330 179 8687 | [info@idiligestates.com](mailto:info@idiligestates.com) Local 28, Edificio D, Centro de Negocios Puerta de Banús, N-340, Km 175, 29660 Nueva Andalucía



# IDILIQ

ESTATES



# IDILIQ

ESTATES

