

R4855246

📍 Calanova Golf

REF# R4855246 550.000 €

BEDS

2

BATHS

2

BUILT

144 m²

TERRACE

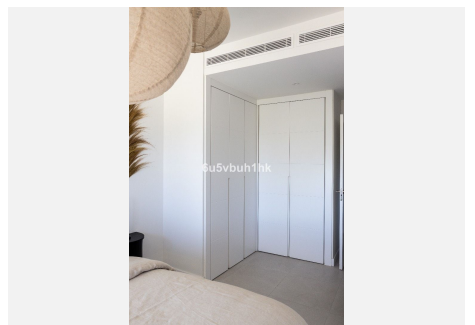
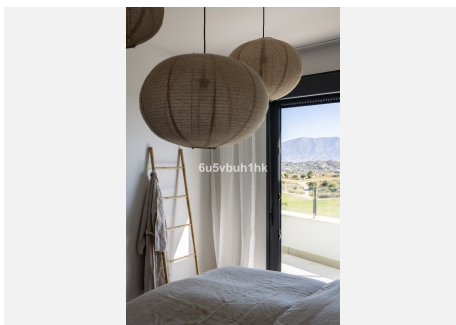
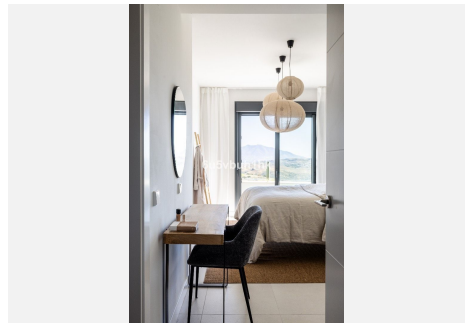
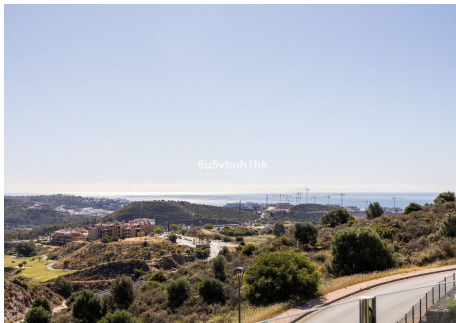
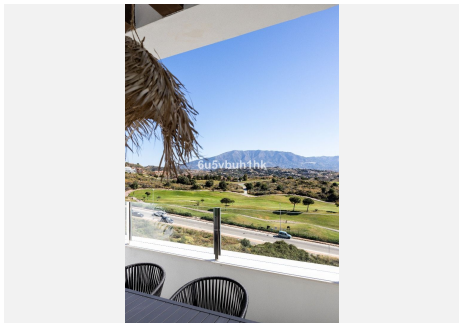
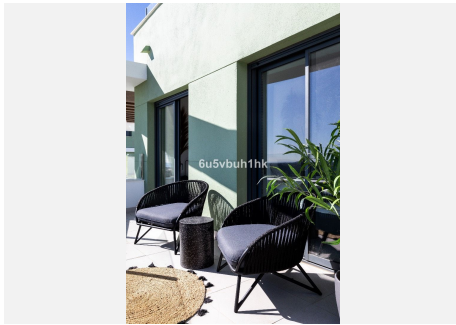
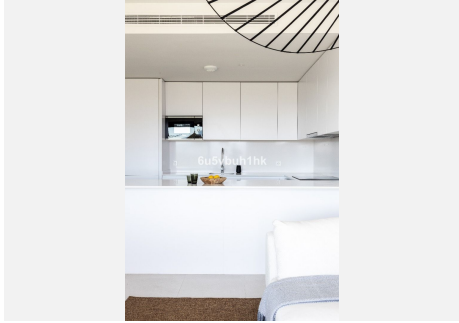
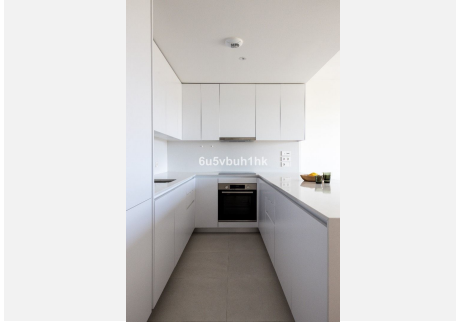
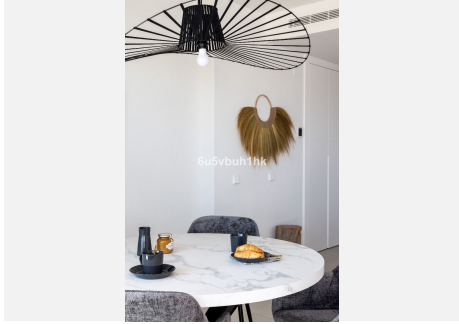
58 m²

Resale of a brand new apartment with 2 bedrooms and 2 bathrooms in Ipanema with panoramic views facing the Calanova Golf course, mountains and the Mediterranean Sea. With a total constructed area of 144sqm (86sqm, this apartment offers ample space to live and enjoy. The apartment has been built to the highest quality standards and offers an 86sqm interior, decorated in a modern and elegant style, a 26sqm terrace with access from the living room and the 2 bedrooms, as well as a 32sqm terrace on the rooftop. The living room is bright and spacious, with an open plan kitchen and large windows allowing in natural light and offering stunning views of the golf course and sea. The kitchen is fully equipped with state-of-the-art appliances. The apartment also includes 2 parking spaces, which provides comfort and security for the owners. Residents can enjoy luxurious common areas and amenities such as two outdoor pools, an indoor pool, and a spa and fitness center. Ipanema reinterprets the exclusivity of the best Brazilian architecture. Its characteristic design and spectacular gardens elevate the residential concept to its maximum expression. With its large gardens and swimming pool with artificial beach, in Ipanema nature is part of your home. Ipanema is located in Cala de Mijas, one of the most charming towns on the Costa del Sol. Its strategic location allows you to enjoy the tranquility of a wonderful natural environment to which are added the services and leisure of Marbella, Malaga, or Fuengirola.

+34 951 123 083 | +44 (0)330 179 8687 | info@idiliqestates.com Local 28, Edificio D, Centro de Negocios Puerta de Banús, N-340, Km 175, 29660 Nueva Andlucia

IDILIQ

ESTATES



IDILIQ

ESTATES

