



R4265758

📍 Los Alamos

REF# R4265758 1.870.000 €

BEDS

4

BATHS

3

BUILT

245 m²

PLOT

270 m²

TERRACE

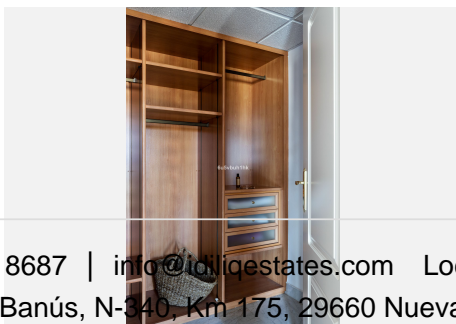
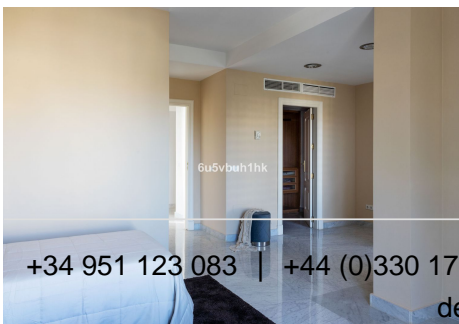
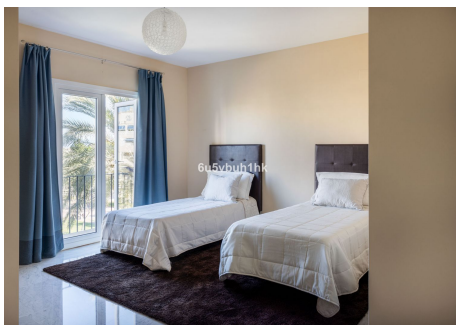
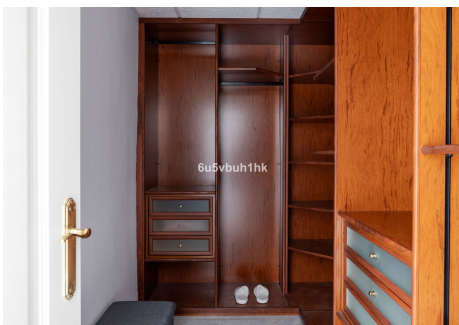
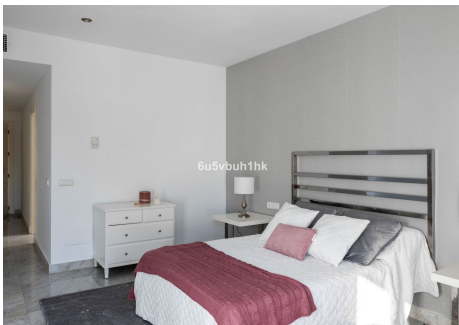
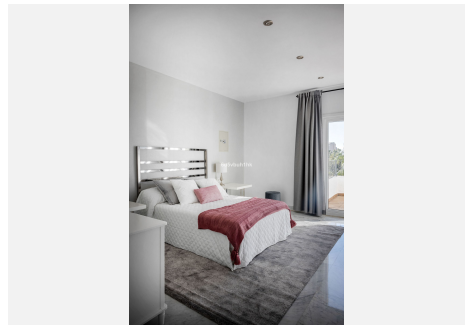
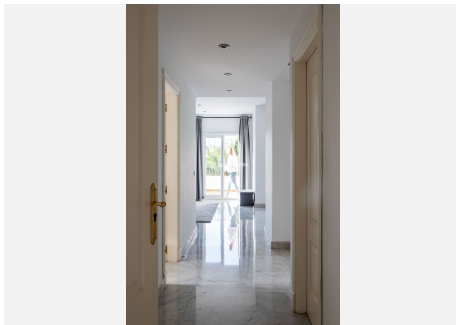
30 m²

Casa Palm is a fantastic 305m² property located in the Puertochico urbanization, in the sought-after neighborhood of Los Álamos, Torremolinos. It was designed by the same architect as the San Carlos and San Luis Castles, so its striking architectural design is reminiscent of the style so typical of its predecessors. Puertochico has 93 extensive homes made with the best materials and finishes, with gardens of lush exotic plants that intoxicate us with peace. The complex is a closed area with a security checkpoint, providing greater peace of mind to its neighbors. Its excellent location places it just a two-minute walk from the beach, close to restaurants, shops, supermarkets, a taxi rank, a bus stop and the commuter train. This area has a pet park, outdoor space for outdoor sports, very close to the access to the highway, the Plaza Mayor shopping center and just 5 minutes from the airport and 15 minutes from Malaga city. It is oriented mainly to the south and has 270 m² of totally exterior housing in each and every one of its rooms. It is located on the third floor of a building distributed in three spacious and complete bedrooms with a dressing room and a Mediterranean-style en-suite bathroom. It has a large rectangular living room that includes two rooms: the meeting area and the relaxation area, with large French doors that give us access to the main 30m² terrace with panoramic views of the sea. It also has a good-sized kitchen that makes it very comfortable and also has a spacious laundry room. It has three parking spaces, one of which can fit two cars and two large

IDILIQ

ESTATES

storage rooms included in the price.



+34 951 123 083 | +44 (0)330 179 8687 | info@idiliqestates.com Local 28, Edificio D, Centro de Negocios Puerta de Banús, N-340, Km 175, 29660 Nueva Andlucia

IDILIQ

ESTATES

