



## MIDDLE FLOOR APARTMENT 3 BEDROOMS 2 BATHROOMS IN BENALMADENA PUEBLO

📍 Benalmadena Pueblo

REF# R5015944 950.000 €

BEDS

3

BATHS

2

BUILT

173 m<sup>2</sup>

TERRACE

49 m<sup>2</sup>

This exceptional three-bedroom apartment is situated in a prestigious luxury complex between Reserva del Higuierón and Benalmádena Pueblo, Malaga. The property offers a prime location with proximity to local amenities, shops, and transport links, making it an ideal choice for those seeking both convenience and tranquillity. The apartment boasts a generous total built area of 173.8m<sup>2</sup>, with 119.4m<sup>2</sup> of interior living space and an expansive 49.9m<sup>2</sup> private terrace, plus a laundry room of 4,50 m<sup>2</sup>, providing ample room for comfortable living and entertaining.

The property is designed to the highest standards, featuring porcelain floors, double glazing, and centralised air-conditioning with zone control via aerothermia. The open-plan kitchen is fully fitted and equipped, seamlessly connecting to the dining area and spacious living room, which grants direct access to the terrace. A separate laundry room is conveniently located adjacent to the kitchen. The master bedroom benefits from a dressing area, en-suite bathroom, and direct terrace access, while the second bedroom also enjoys terrace access and fitted wardrobes. The third bedroom is equipped with built-in wardrobes, and a

+34 951 123 083 | +44 (0)330 179 8687 | [info@idiliqestates.com](mailto:info@idiliqestates.com) Local 28, Edificio D, Centro de Negocios Puerta de Banús, N-340, Km 175, 29660 Nueva Andalucía

second bathroom with a shower serves the additional bedrooms.

Residents of this gated community enjoy access to a wealth of on-site facilities, including a state-of-the-art gym, spa, Turkish bath, sauna, and two outdoor communal swimming pools. The complex also offers communal gardens, a lift, and secure underground parking, with this apartment including two dedicated parking spaces and a storage room. High-speed internet and electric blinds further enhance the comfort and functionality of the property.

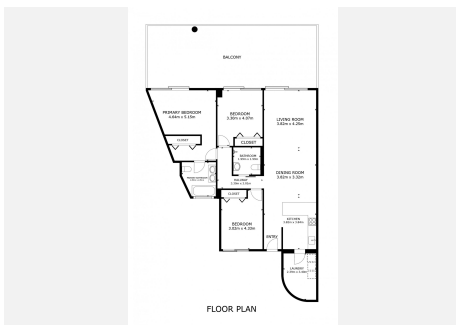
With its panoramic sea views, excellent condition, and the possibility to buy the existing luxurious furniture package, this spacious corner apartment represents a unique opportunity to acquire a luxurious home in one of Benalmádena's most sought-after developments. The combination of superior amenities, modern design, and a prime location ensures a lifestyle of comfort and distinction.





# IDILIQ

## ESTATES



# IDILIQ

ESTATES

