

# IDILIQ

ESTATES



R4415317

📍 Alhaurín de la Torre

REF# R4415317 999.000 €

BEDS

6

BATHS

6

BUILT

620 m<sup>2</sup>

PLOT

1180 m<sup>2</sup>

TERRACE

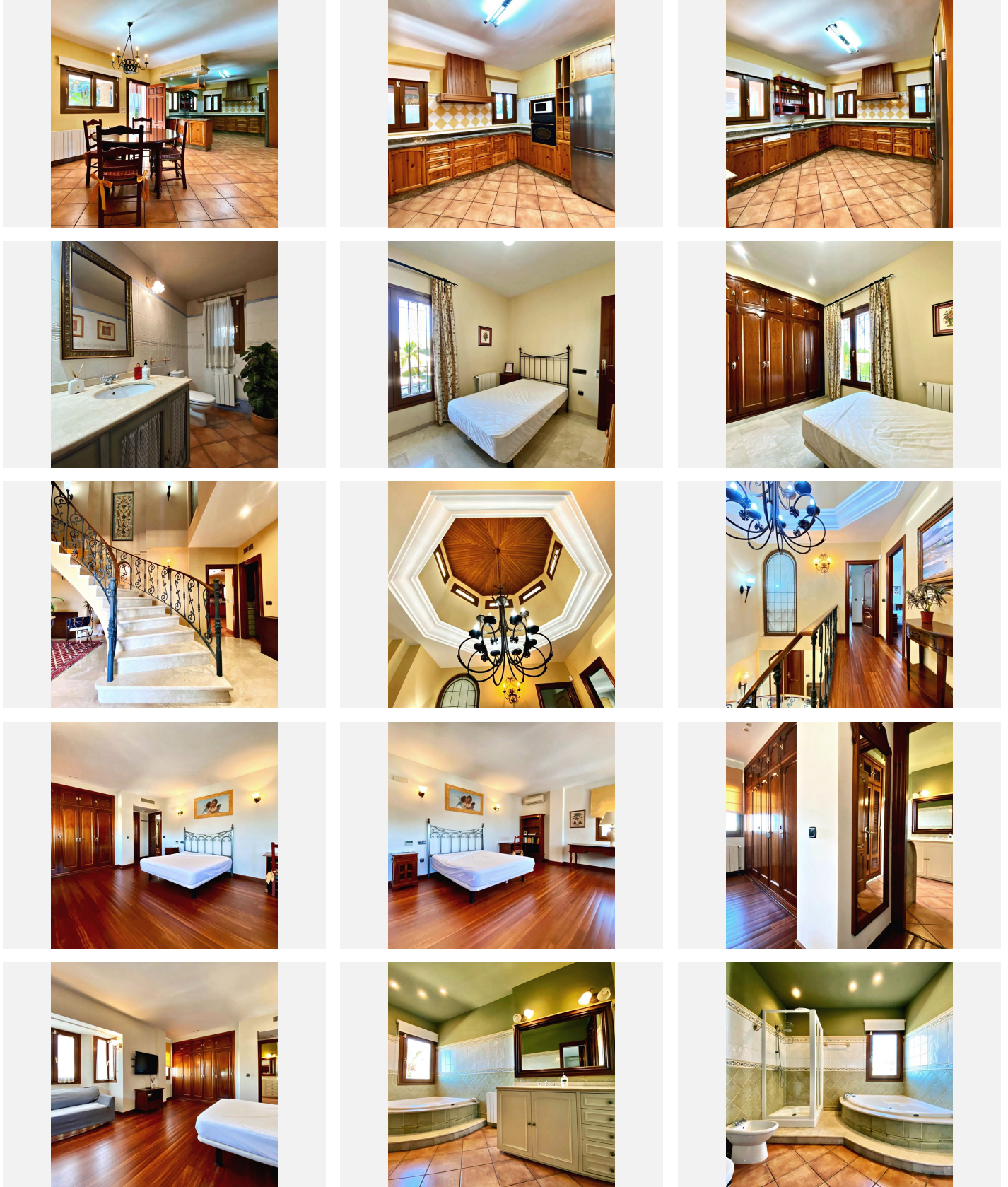
80 m<sup>2</sup>

"Fantastic Villa in El Lagar one of the best areas of Alhaurín de la Torre. Built on a 1,180m<sup>2</sup> plot, tropical-style gardens with common areas with barbecue, bar, pool with pre-installation for heating, large terrace and gazebo to enjoy with family and friends. As for the house, it presents on the main floor, a spectacular entrance hall with a double sloping ceiling, skylight with electric windows for natural ventilation, a 60m<sup>2</sup> living room with a fireplace and a dining room, a large kitchen with a fully furnished living area which connects to the porch. access to the pool. In addition, this floor has a bedroom with bathroom en suite, toilet and office. On the upper floor there are 3 bedrooms with fitted wardrobes which have en-suite bathrooms, the master bedroom has a separate dressing room. In the semi-basement there is a 50M<sup>2</sup> living room with a fireplace and a pool table. It also has a bar, gym, cellar, bathroom, laundry, storage room and cistern. It also has a service bedroom with bathroom. In addition to a garage for 3 cars. Housing with all kinds of details. Excellent qualities, alarm, video surveillance, latest generation exterior carpentry. natural wood and marble floors. central heating. Each room enjoys radiators and thermostat. Wonderful views. It has all the characteristics and qualities to enjoy the greatest comfort and wide spaces while living in a natural environment. It is located 10 minutes by car from the airport, 10 min. from Malaga Center and 15 minutes from the beach and easily walking to the center of town. Do not hesitate to contact us for more information."

+34 951 123 083 | +44 (0)330 179 8687 | info@idiliqestates.com Local 28, Edificio D, Centro de Negocios Puerta de Banús, N-340, Km 175, 29660 Nueva Andlucia

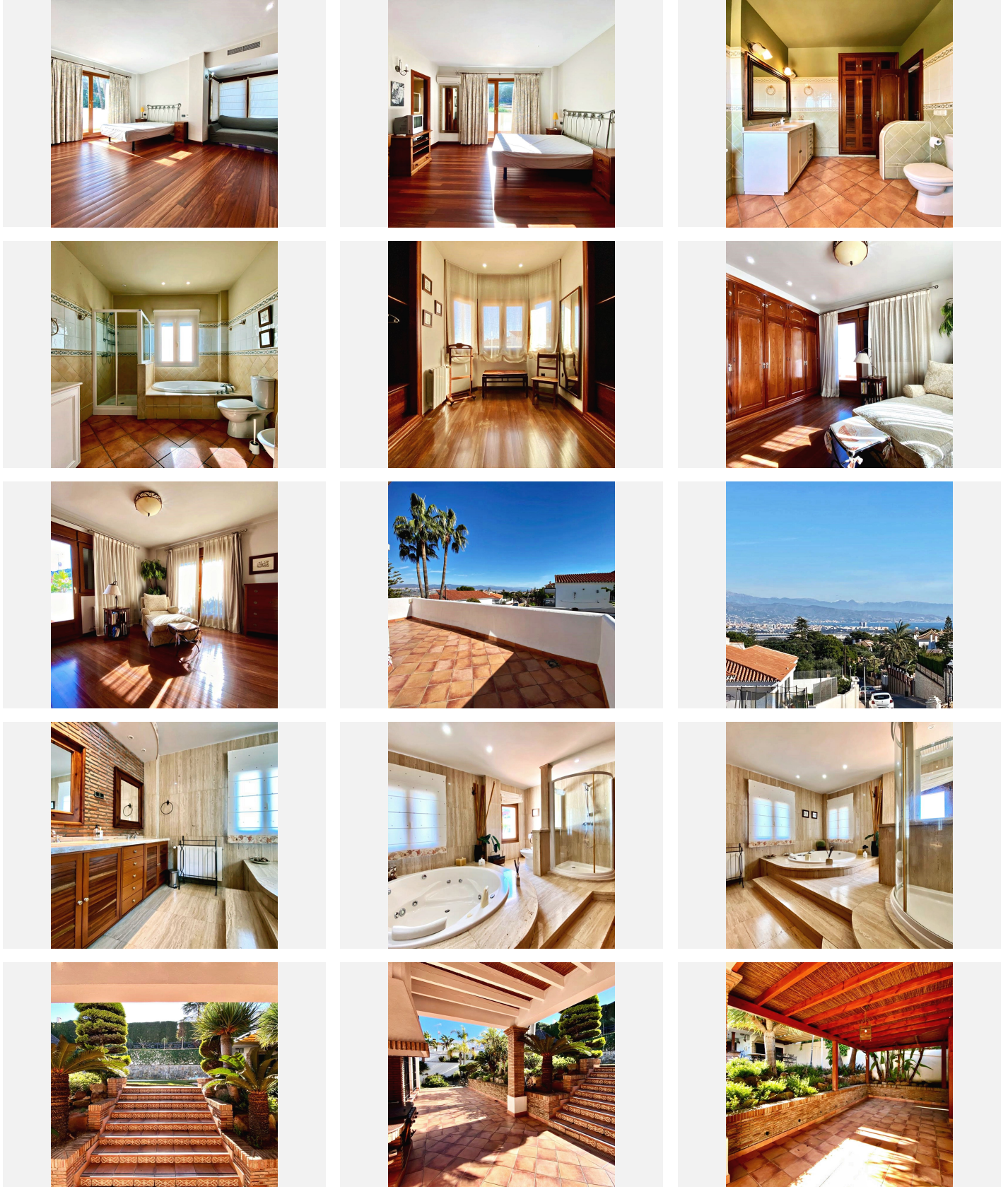
# IDILIQ

ESTATES



# IDILIQ

ESTATES



# IDILIQ

ESTATES

