

IDILIQ

ESTATES



R4641994

📍 Antequera

REF# R4641994 2.500.000 €

BEDS

5

BATHS

5

BUILT

643 m²

PLOT

39428 m²

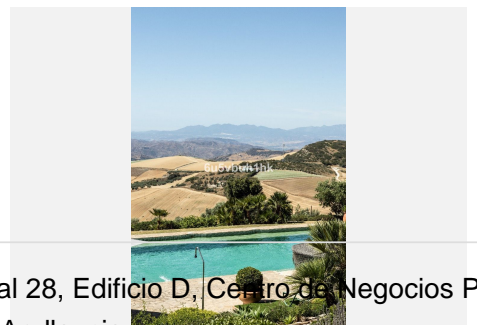
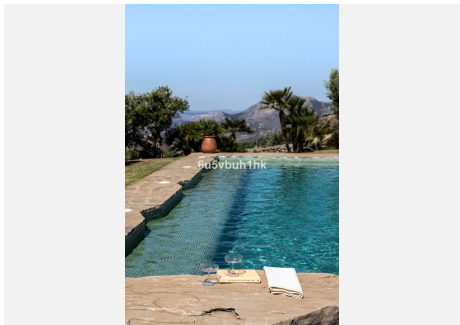
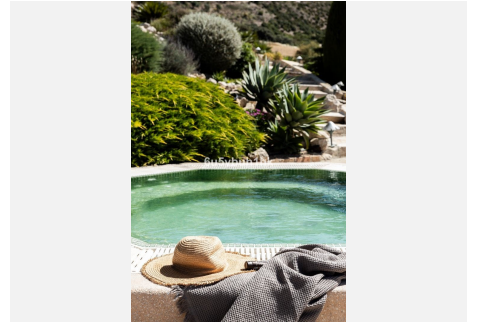
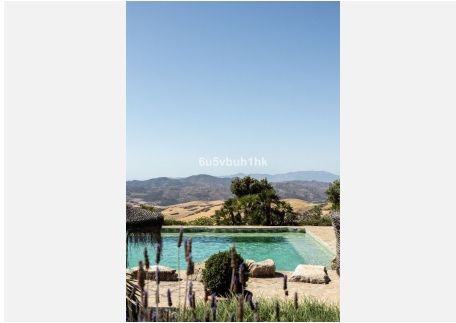
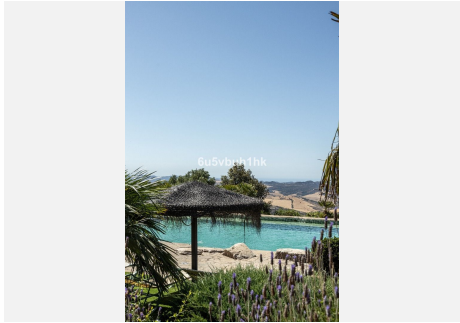
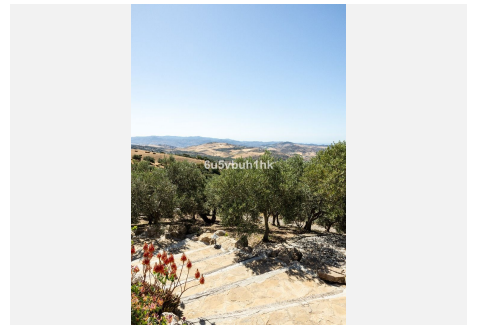
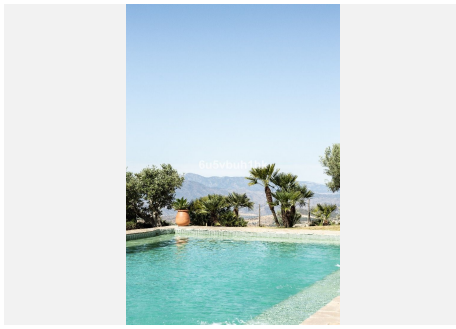
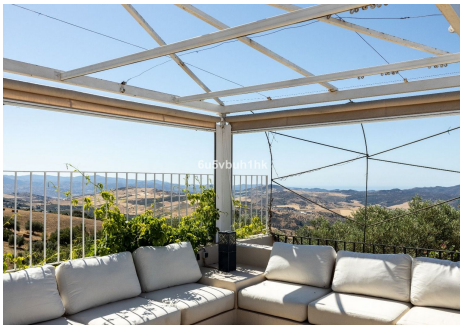
Welcome to this exceptional estate nestled in the picturesque countryside of Antequera, where modern luxury seamlessly integrates with the tranquility of rural living. Divided into two levels, this captivating property offers a thoughtfully designed layout to enhance both space and functionality, ensuring a lifestyle of unparalleled comfort and elegance. As you enter through the gated entrance, you're greeted by breathtaking views of the sea, rolling hills, and majestic mountains, creating a stunning backdrop for daily life. The estate features an expansive ecological olive tree plantation, adding to its charm and environmentally conscious appeal. Step inside to discover a modern sanctuary boasting five spacious bedrooms, each accompanied by its own en-suite bathroom for optimal privacy and comfort. A well-appointed guest toilet ensures convenience for visitors, while a separate nanny or worker apartment provides additional flexibility. The heart of the home lies within the expansive open-plan layout encompassing the kitchen, dining, and living areas. Flooded with natural light, this inviting space showcases sleek finishes and contemporary design elements, perfect for both relaxation and entertaining. Gather around the open fireplace on cooler evenings, creating cherished memories with loved ones. Outside, multiple terraces invite you to soak in the peaceful ambiance and breathtaking vistas, ideal for alfresco dining or simply unwinding amidst the beauty of nature. A dedicated BBQ area promises delightful culinary experiences, while closed parking for two cars and

+34 951 123 083 | +44 (0)330 179 8687 | info@idiliqestates.com Local 28, Edificio D, Centro de Negocios Puerta de Banús, N-340, Km 175, 29660 Nueva Andlucia

IDILIQ

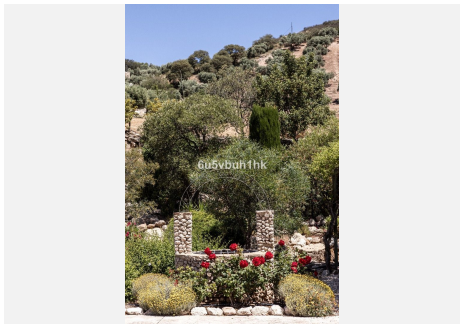
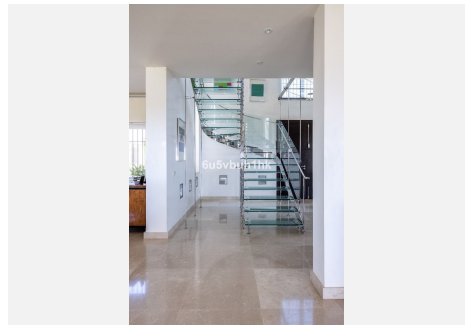
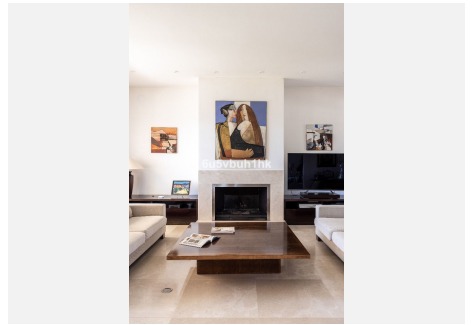
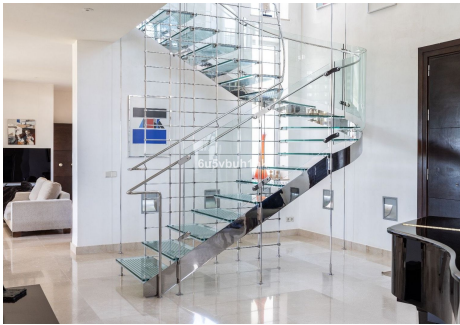
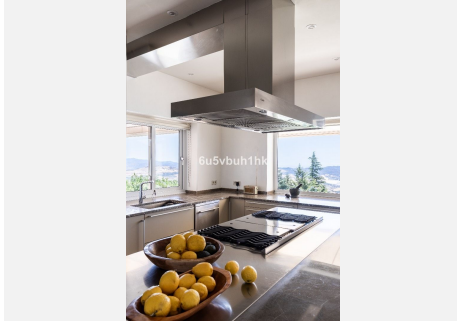
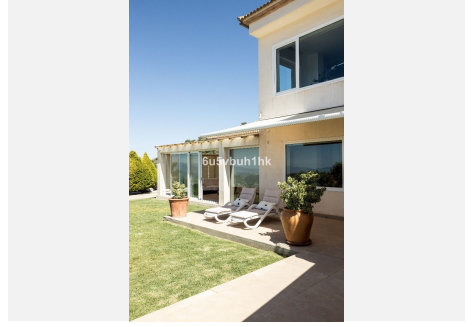
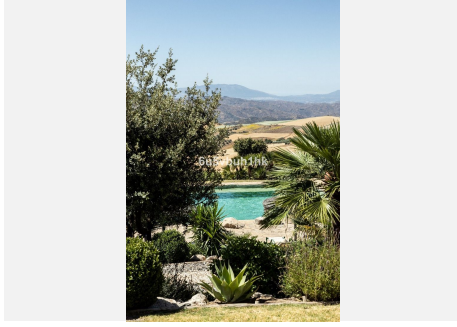
ESTATES

covered parking for four cars offer ample space for vehicles. Equipped with solar panels and photovoltaic systems, this almost self-sufficient estate embodies sustainability and energy efficiency, ensuring a harmonious coexistence with its natural surroundings. Antequera, known for its rich history and stunning landscapes, provides a tranquil escape from the hustle and bustle of city life while offering convenient proximity to Malaga city. Just a short drive away, Malaga city offers a vibrant cultural scene, beautiful beaches, and a myriad of dining and entertainment options, ensuring the best of both worlds for residents of this remarkable estate. Experience the essence of country living in this modern gem, meticulously crafted to elevate your lifestyle. Schedule your viewing today and discover the perfect blend of luxury, tranquility, and convenience in the heart of Andalusia.



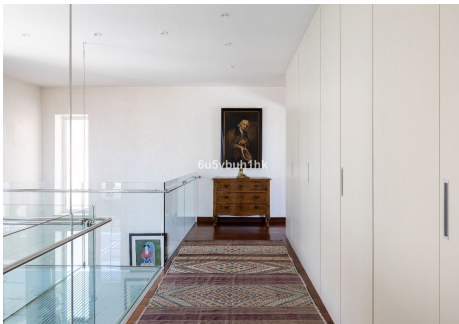
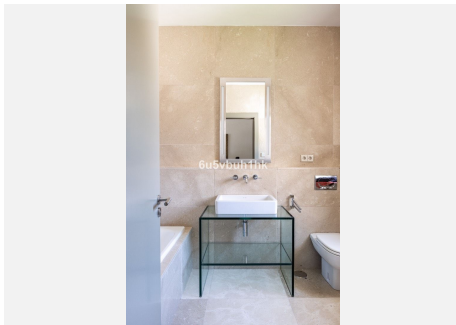
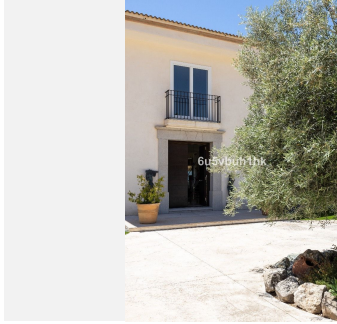
IDILIQ

ESTATES



IDILIQ

ESTATES



IDILIQ

ESTATES

