

GROUND FLOOR APARTMENT 2 BEDROOMS 2 BATHROOMS IN BENAHAVÍS

Benahavís

REF# R5406991 439.000 €

BEDS

2

BATHS

2

BUILT

145 m²

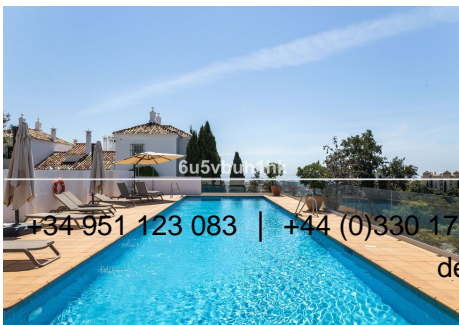
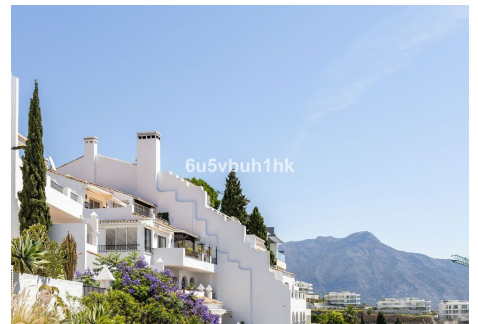
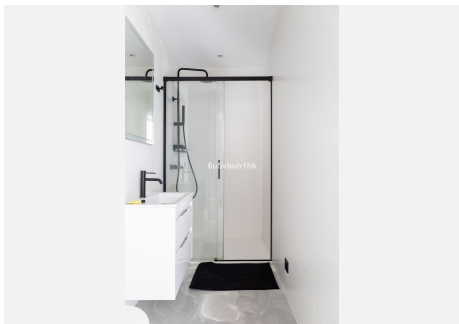
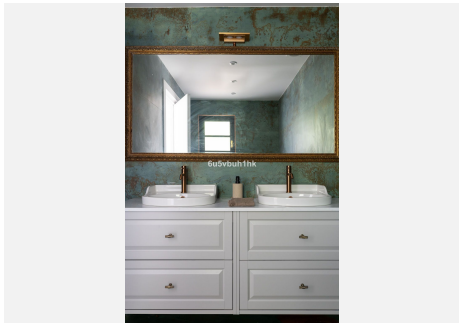
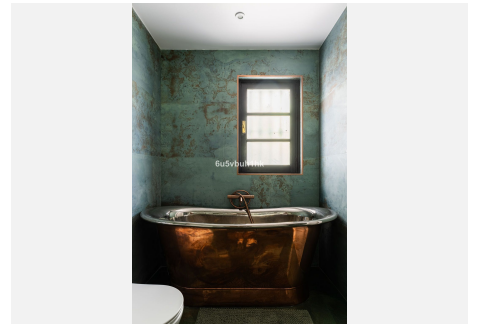
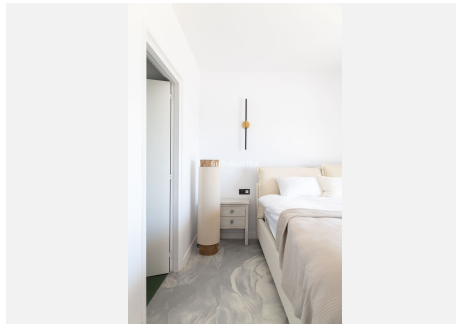
Discover this beautifully renovated 2-bedroom, 2-bathroom apartment in the sought-after residential community of Las Colinas de Marbella, offering stunning sea views and stylish contemporary living in one of the Costa del Sol's most desirable areas. The property welcomes you through a spacious terrace. Inside, you will find a bright and airy open-plan living space with a gorgeous modern kitchen featuring a central island, designed for both everyday comfort and entertaining. The apartment has been completely renovated with great taste, using light tones and elegant finishes throughout, including beautiful resin flooring that adds a modern and sophisticated touch. Both bedrooms are spacious and beautifully presented, each benefiting from a bathroom, providing privacy and comfort for residents and guests alike. This turnkey property is ideal for a small family, remote workers seeking a peaceful yet connected lifestyle, or as a stylish holiday home and investment opportunity on the Costa del Sol. Located in the municipality of Benahavís, Las Colinas de Marbella is a peaceful gated community surrounded by nature and golf courses, while still being only a short drive from the beaches, restaurants, and amenities of San Pedro de Alcántara, Puerto Banús, and Marbella.

The area is highly appreciated for its tranquillity, security, and excellent access to golf, international schools, +34 951 123 083 | +44 (0)330 179 8687 | info@idiliqestates.com Local 28, Edificio D, Centro de Negocios Puerta de Banús, N-340, Km 175, 29660 Nueva Andlucia

IDILIQ

ESTATES

hiking trails, and some of the finest dining options on the coast. A stylish and move-in-ready apartment with amazing sea views in an excellent location — perfect for enjoying the best of Mediterranean living.



+34 951 123 083 | +44 (0)330 179 8687 | info@idiliqestates.com Local 28, Edificio D, Centro de Negocios Puerta de Banús, N-340, Km 175, 29660 Nueva Andlucia