

TOWNHOUSE 4 BEDROOMS 3 BATHROOMS IN NUEVA ANDALUCÍA

 Nueva Andalucía

REF# R5421829 1.575.000 €

BEDS

4

BATHS

3

BUILT

170 m²

Beautifully refurbished to an exceptional standard, this elegant four-bedroom townhouse combines contemporary Scandinavian design, premium finishes, and an unbeatable location in the heart of Aloha, one of Nueva Andalucía's most sought-after residential areas.

One of the property's greatest advantages is its location in a flat and highly walkable part of Nueva Andalucía, making it easy to enjoy the area's many amenities on foot or by bicycle. Restaurants, cafés, shops, tennis and padel clubs are all just a short stroll away, while Puerto Banús can be reached comfortably on foot.

Nestled within a charming and tranquil community of just 13 townhouses and a small number of apartments, the property enjoys a peaceful setting surrounded by beautifully maintained communal gardens and a large swimming pool. Despite its quiet location, everything you need is within easy reach.

IDILIQ

ESTATES

The west-facing orientation fills the home with natural light throughout the day and allows you to enjoy sunny afternoons and beautiful evening light.

Distributed over two levels, the property has been thoughtfully redesigned to create a bright, functional, and stylish living environment.

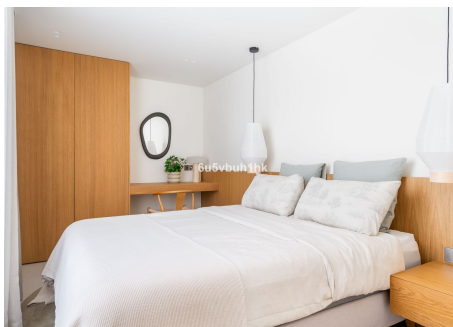
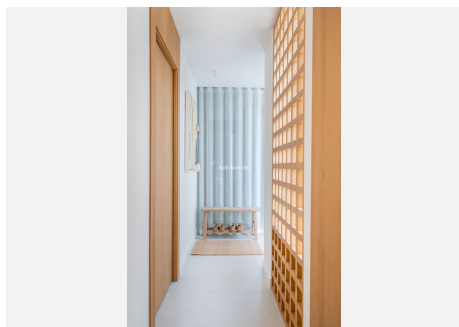
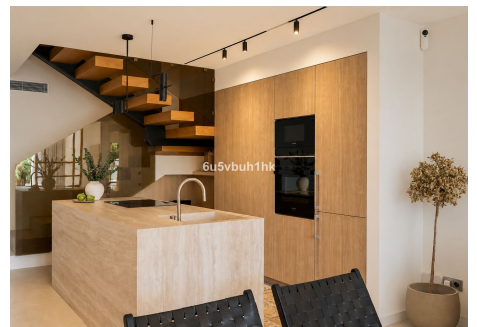
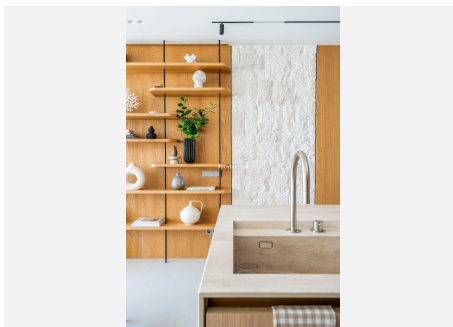
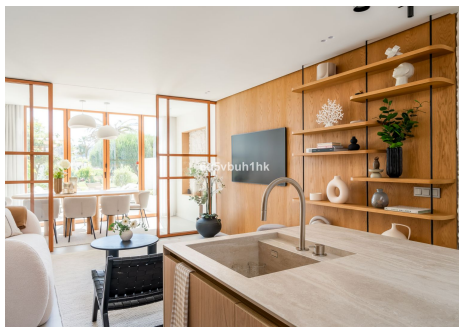
The ground floor welcomes you with an inviting entrance hall leading into a stunning open-plan living, dining, and kitchen area. The bespoke kitchen is fully equipped with high-end Miele appliances and seamlessly connects with the social spaces, creating the perfect setting for both everyday living and entertaining. This level also features two spacious guest bedrooms and a fully equipped bathroom with a practical laundry area and washing tower.

A striking staircase with impressive double-height ceilings leads to the upper floor, where you will find the elegant master suite complete with its own private terrace and a luxurious en-suite bathroom featuring both a bathtub and walk-in shower. A second generously sized guest bedroom with an en-suite bathroom completes this level.

Designed for year-round comfort, the home benefits from air conditioning, heating, and underfloor heating throughout the entire property.

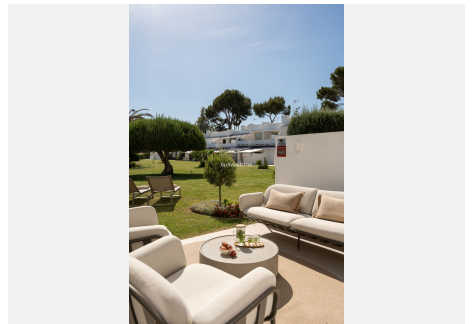
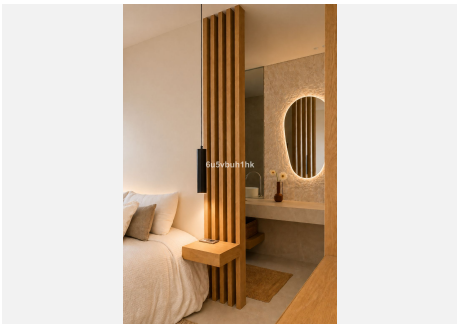
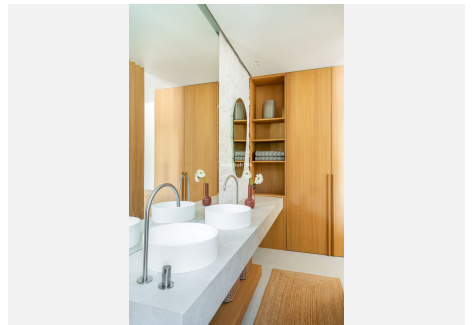
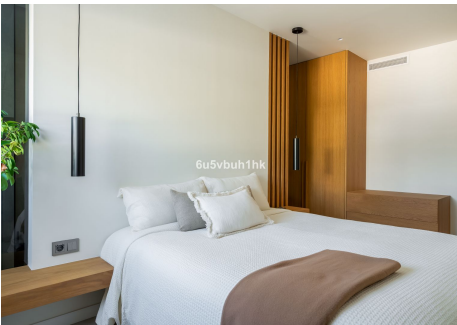
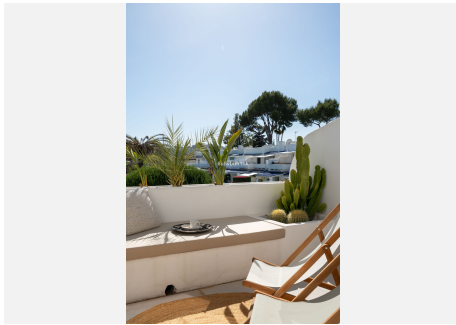
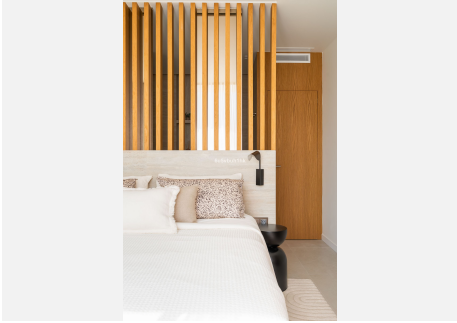
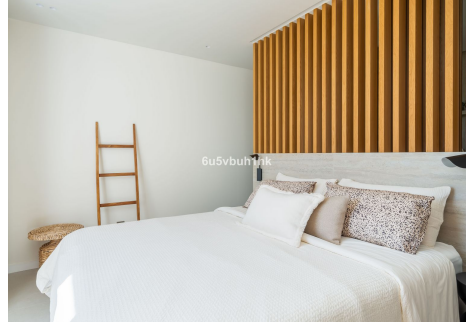
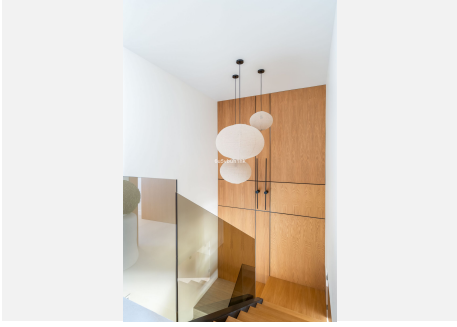
Additional features include a private covered parking space, premium materials throughout, abundant storage, and a carefully considered interior design that perfectly balances elegance and practicality.

The property is sold fully furnished with carefully selected high-quality furniture and designer finishes, making it a truly turnkey home ready to be enjoyed from day one.



IDILIQ

ESTATES



IDILIQ

ESTATES

