



R5402743

📍 Riviera del Sol

REF# R5402743 525.000 €

BEDS

3

BATHS

2

BUILT

154 m²

PLOT

255 m²

This elegant, two-story semi-detached villa on a 255 m² plot offers a perfect combination of spaciousness, comfort, and excellent finishes, designed for enjoying everyday life in a peaceful setting.

The main floor features a large and bright living-dining room with direct access to the outside, a fully equipped independent kitchen with high-quality appliances, a guest toilet, and a practical storage room. From this floor, you can access a pleasant porch of approximately 20 m², which leads to a beautifully maintained 139 m² private garden, the upkeep of which is included in the community fees. The outdoor space also includes a barbecue area, ideal for gatherings and enjoying time outdoors.

The upper floor houses three double bedrooms and two full bathrooms. The master bedroom has an en-suite bathroom with a shower and bathtub, as well as access to two private terraces with unobstructed views of Riviera del Sol, providing natural light and a pleasant sense of spaciousness.

The property is equipped with a reverse osmosis water filtration system in the kitchen, an electric water heater, and individual air conditioning units in all rooms. Built with high-quality materials, this property is also

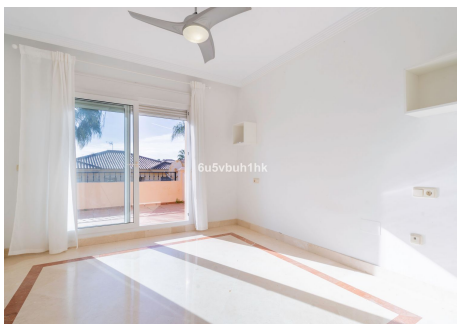
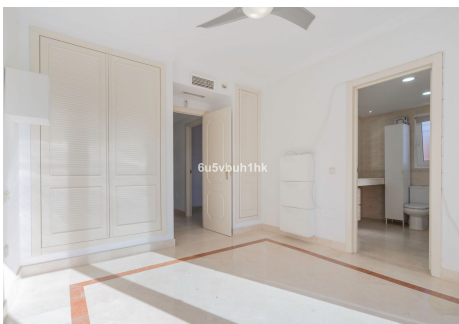
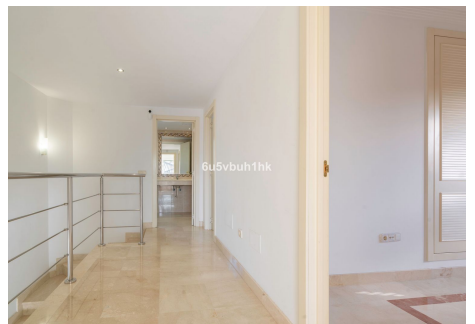
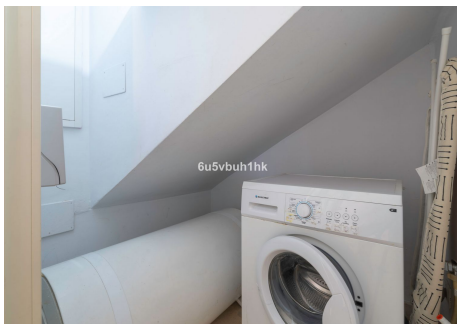
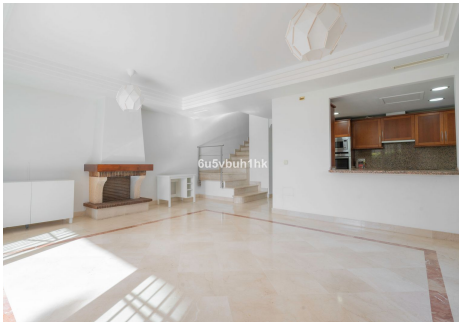
+34 951 123 083 | +44 (0)330 179 8687 | info@idiliqestates.com Local 28, Edificio D, Centro de Negocios Puerta de Banús, N-340, Km 175, 29660 Nueva Andlucia

IDILIQ

ESTATES

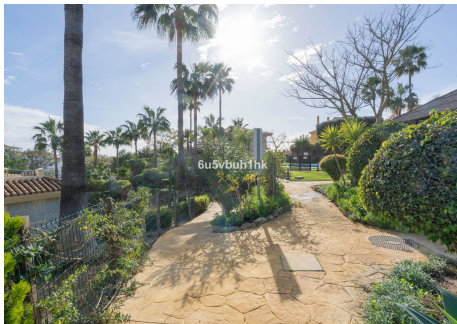
located in a prime area, very close to golf courses and with excellent transport links.

An ideal property for those seeking comfort, space, and a well-maintained environment on the Costa del Sol.



IDILIQ

ESTATES



IDILIQ

ESTATES

