



R5412136

 Benalmadena Costa

REF# R5412136 1.250.000 €

BEDS

4

BATHS

5

BUILT

550 m²

PLOT

800 m²

Discover this stunning light-filled detached villa, located in one of the most sought-after areas of the Costa del Sol, where white tones, spaciousness and natural light take center stage throughout the home.

The property offers 550 m² of built area on an 800 m² plot, distributed over two comfortable floors. It features five generous bedrooms and four fully equipped bathrooms, making it ideal for families or for those who value space and comfort.

The interior stands out for its bright, open-plan rooms, with large windows that flood the house with natural light, enhancing the white finishes and creating a fresh, elegant and welcoming atmosphere. The fully fitted, spacious kitchen combines functionality and design, perfect for everyday living and entertaining.

Outside, the villa boasts a large sun-drenched terrace, ideal for relaxing or hosting gatherings, a private swimming pool offering total privacy, and a well-maintained garden that adds a sense of tranquility and connection with nature.

+34 951 123 083 | +44 (0)330 179 8687 | info@idiliqestates.com Local 28, Edificio D, Centro de Negocios Puerta de Banús, N-340, Km 175, 29660 Nueva Andlucia

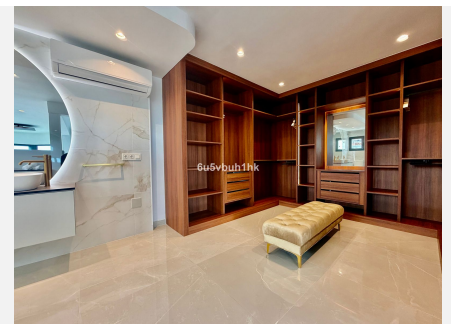
IDILIQ

ESTATES

The property enjoys excellent public transport links to Málaga, Torremolinos and Fuengirola and is adapted for people with reduced mobility, adding further value and convenience.

A home that perfectly combines light, white elegance, space and quality of life, designed to enjoy the very best of the Mediterranean lifestyle.

???? A unique opportunity not to be missed – arrange your viewing today.



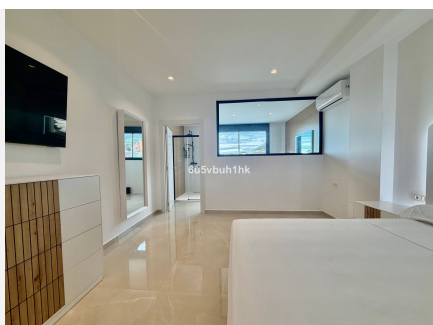
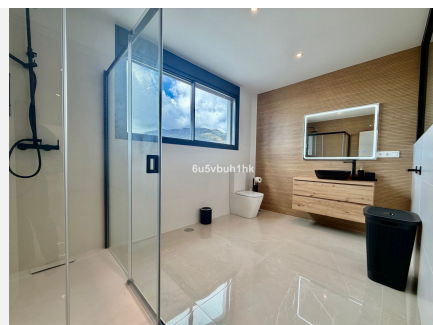
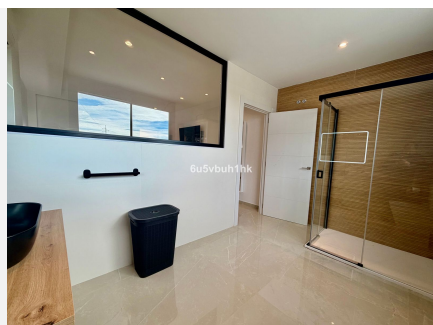
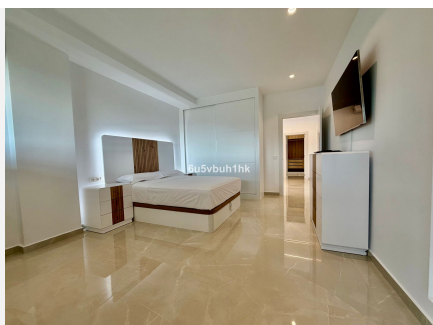
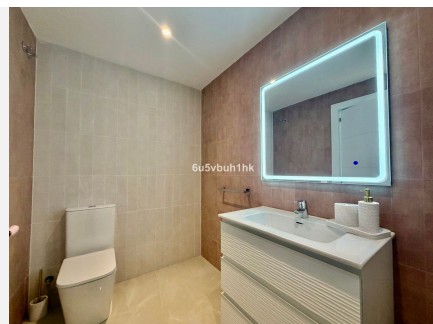
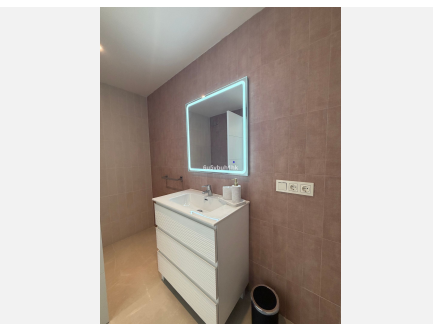
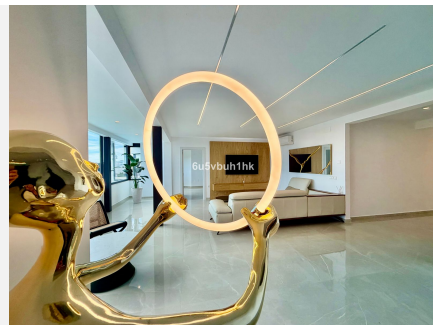
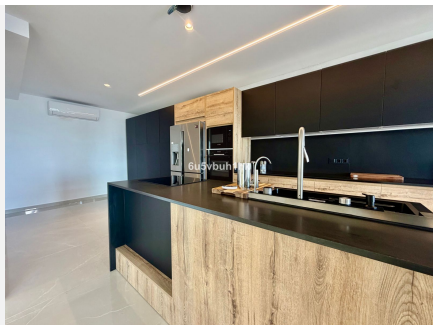
IDILIQ

ESTATES



IDILIQ

ESTATES



IDILIQ

ESTATES

